



PAVERS | WALLS | OUTDOOR LIVING KITS



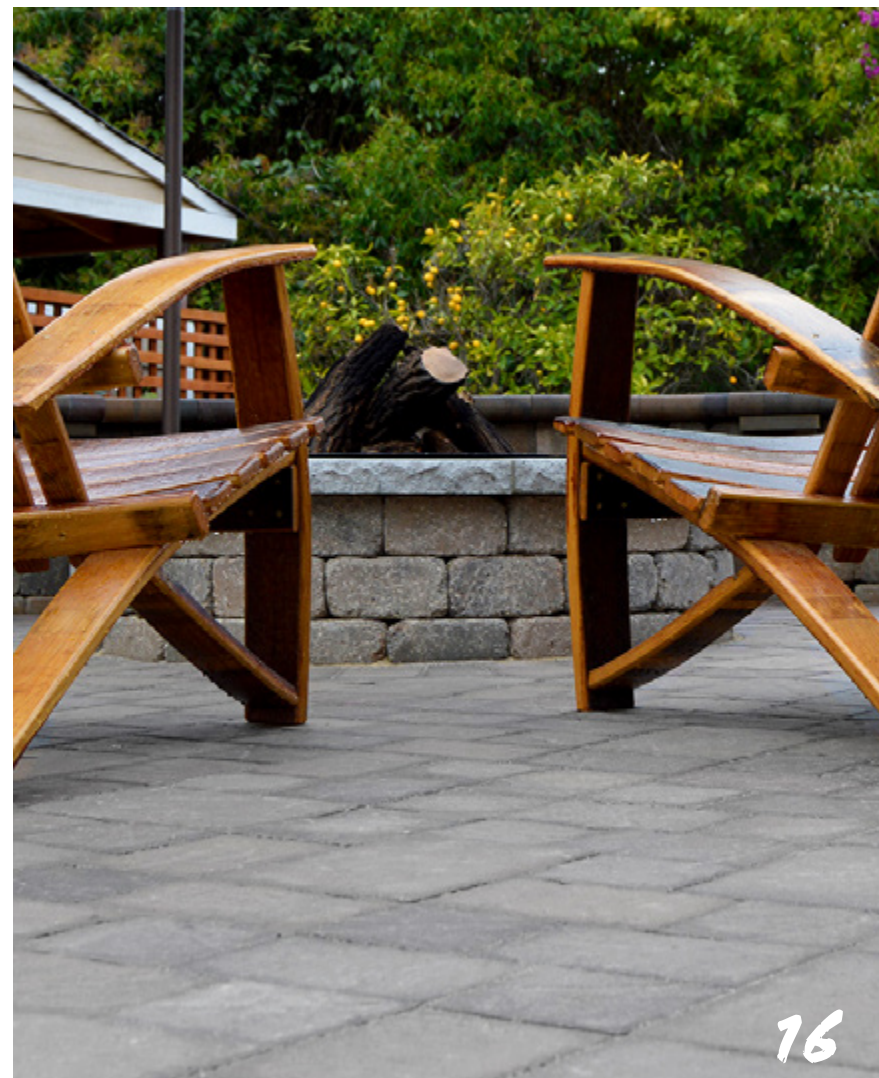
GREAT HARDSCAPES START HERE®





# BUILDING VALUES

For over 40 years, Basalite® has worked on growing our business by building relationships. We have created strong bonds with our dealers, masons, architects, engineers and licensed contractors. From working together with the common purpose of installing the finest hardscape products available, we have seen our products placed in settings that range from practical to magical. At Basalite®, we are committed to being the best in the industry. Our focus now, just as it was when we opened our doors all those years ago, is on service, quality and innovation. Those are the values that have made us the industry leader we are today and the same principles that will guide us far into the future.



# CONTENTS

<b>INTRODUCTION</b>	
Inspiring Outdoor Spaces	2
Paver Application Use Guide	8
<b>PAVERS</b>	
Sierra Collection	10
Premier Smooth Combo Pallet	12
Premier Smooth	14
Premier Slate	16
Italian Renaissance Premier	18
Mission	20
CityScape Series	22
Plank Pavers	24
Interstate® Brick Clay Pavers	26
<b>PERMEABLE PAVERS</b>	
Spec Pave 100	28
<b>RETAINING &amp; LANDSCAPE WALLS</b>	
Allan Block® Collection	30
Allan Block Aztec™ Collection	32
Allan Block Europa® Collection	34
Allan Block® Courtyard & Old Country	36
Allan Block Fence™	38
Contemporary Wall & Rustic Wall	40
ReCon Wall Systems	42
Rosetta® Outcropping	44
Rosetta® Belvedere	46
Rosetta® Kodah	48
Rosetta® Step Collection	50
<b>OUTDOOR LIVING KITS</b>	
Necessaries™ The Kitchen	52
Necessaries™ Bars & Grills	54
Necessaries™ Outdoor Fireplaces	56
Fire Pits	58
Necessaries™ Water Features	60
Necessaries™ Tables, Pillars & Seat Walls	62
<b>ACCESSORIES &amp; PATTERNS</b>	
Accessories	64
Paver Patterns	66
<b>INSTALLATION INSTRUCTIONS</b>	
Typical Paver Installation	68
Permeable Paver Installation	68
Typical Retaining Wall Installation	69



# GREAT HARDSCAPES START HERE



Necessaries™ The Kitchen™ in Positano with Black Pearl Granite countertop.  
Outdoor Pizza Oven and Green Egg sold separately - see page 52

Basalite® sets the standard for hardscapes with our extensive collection of quality pavers, walls and outdoor living kits. Our large selection of styles, shapes, colors and textures allows you to transform patios, driveways, outdoor kitchens, pool areas and walkways into beautiful outdoor living areas.

Get inspiration for your next outdoor project with these designs showcasing real-life projects. Share your photos with us on Instagram, Pinterest, Twitter, Facebook or LinkedIn.



Rosetta® Outcropping in Sandstone - see page 44



Premier Smooth in Positano - see page 12



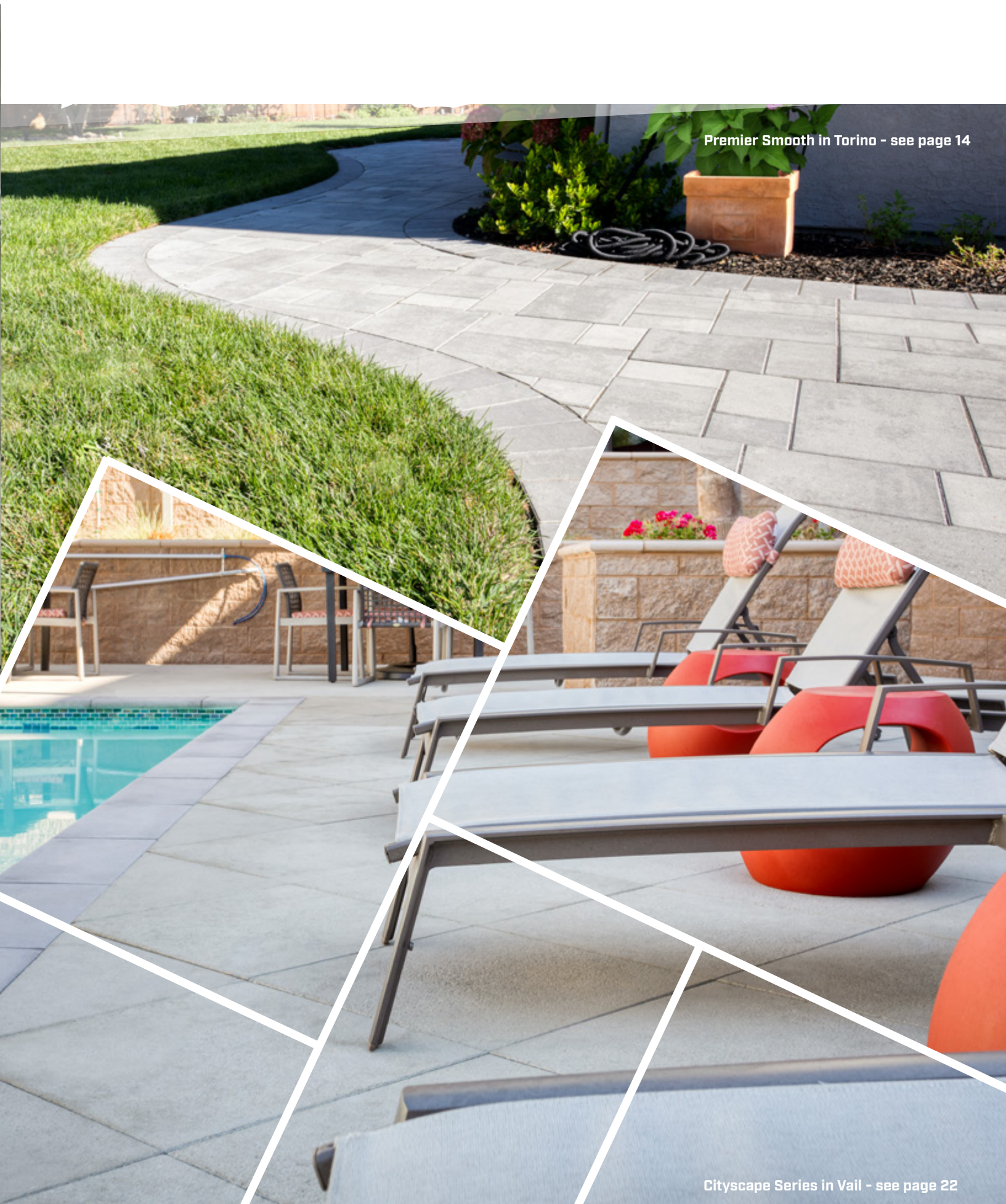
Sierra Collection Pavers in Pebble Creek - see page 10

Rustic wall in Positano & Verona blend - see page 40

AB® Courtyard in Grey Blend - see page 36



Premier Slate in Torino with color boost sealer - see page 16



Premier Smooth in Torino - see page 14

Cityscape Series in Vail - see page 22



**PEDESTRIAN**  
Indicates product is suitable for projects with pedestrian use.

## WHICH PRODUCT IS RIGHT FOR YOU?

Not sure what product will fit your project? Use our Paver Application Use Guide as a reference for what paver products are suitable for pedestrian and vehicular traffic conditions.



**LIGHT-DUTY VEHICULAR**  
Indicates product is suitable for projects with light-duty vehicular use like driveways and parking stalls.



**COMMERCIAL VEHICULAR**  
Indicates product is suitable for projects with commercial vehicular use like parking lots and roadways.

## PAVER APPLICATION USE GUIDE

PAGE	PRODUCT	PRODUCT SIZE	HEIGHT			
10	Sierra Collection 6x6	5.83" W x 5.83" L	60mm	✓	✓	
10	Sierra Collection 6x9	5.83" W x 8.78" L	60mm	✓	✓	
10	Sierra Collection 6x12	5.83" W x 11.73" L	60mm	✓	✓	
10	Sierra Collection 9x12	8.78" W x 11.73" L	60mm	✓	✓	
10	Sierra Collection 12x12	11.73" W x 11.73" L	60mm	✓	✓	
10	Sierra Collection 12x18	11.73" W x 17.64" L	60mm	✓	✓	
12-17	Premier Smooth/Slate Series 6x6	5.83" W x 5.83" L	60mm	✓	✓	
12-17	Premier Smooth/Slate Series 6x9	5.83" W x 8.78" L	60mm	✓	✓	
12-17	Premier Smooth/Slate Series 6x12	5.83" W x 11.73" L	60mm	✓	✓	
12-17	Premier Smooth/Slate Series 9x12	8.78" W x 11.73" L	60mm	✓	✓	
12-17	Premier Smooth/Slate Series 12x12	11.73" W x 11.73" L	60mm	✓	✓	
12-17	Premier Smooth/Slate Series 12x18	11.73" W x 17.64" L	60mm	✓	✓	
18	Italian Renaissance Premier 6x6	5.83" W x 5.83" L	60mm	✓	✓	
18	Italian Renaissance Premier 6x9	5.83" W x 8.78" L	60mm	✓	✓	
18	Italian Renaissance Premier 6x12	5.83" W x 11.73" L	60mm	✓	✓	
18	Italian Renaissance Premier 9x12	8.78" W x 11.73" L	60mm	✓	✓	
20	Mission 4x8x60	3.85" W x 7.795" L	60mm	✓	✓	
20	Mission 4x8x80 Machine-Lay HB	3.85" W x 7.795" L	80mm	✓	✓	✓
22	Cityscape 24x24	23.94" W x 23.94" L	60mm	✓		
24	Plank Paver 4x12	4" W x 12" L	102mm	✓	✓	✓
24	Plank Paver 4x18	4" W x 18" L	102mm	✓	✓	
26	Clay Pavers 4x8 True	4" W x 8" L	57mm	✓	✓	✓
26	Clay Pavers 4x8 True Split	4" W x 8" L	32mm	✓	✓	
28	100mm Spec Pave	5.5" W x 11" L	100mm	✓	✓	✓

The aspect ratio of the paver unit (length/height= aspect ratio) directly correlates to the recommended usage.

A ratio of 5:1 for Pedestrian applications only.

Generally not to exceed 4:1 for Residential and Light-Duty Vehicular applications. Larger sizes with aspect ratio of 5:1 can be used in residential driveways if done within a 3 or 4 piece pattern.

Generally not to exceed 3:1 for Commercial Vehicular applications

\*Ideal size/thickness for pavements designed to handle heavy vehicles such as transports, buses and fire trucks.

The Paver Application Use Guide chart is for reference only. Contact your Basalite Representative for specific design details.

*For Vehicular traffic, a Herringbone laying pattern is essential for most vehicular trafficked pavements and becomes more critical as the demands on the pavements increase.*

**All pavements require a site specific design by a professional engineer. This chart is only a guideline.**

### PAVEMENT DESIGN REFERENCES:

- ASCE 58-16 Structural Design of Interlocking Concrete Pavement for Municipal Streets and Roadways.
- ASCE 68-18 Permeable Interlocking Concrete Pavement
- ICPI Tech Spec 4 Structural Design of Interlocking Concrete Pavements



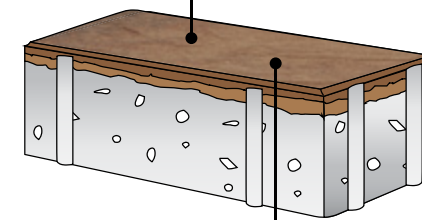
# SIERRA COLLECTION

Pre-Treated Stain Resistant Paver

## THE Stay-True™ DIFFERENCE



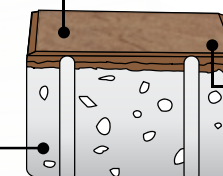
The top of the paver includes rich colors and a durable surface, made up of fine aggregates and high-cement content.



Basalite® Stay-True™ Technology prevents pavers from looking tired and faded caused by UV light and acid rain.



Basalite® Stay-True™ Technology protects against stains and soiling.



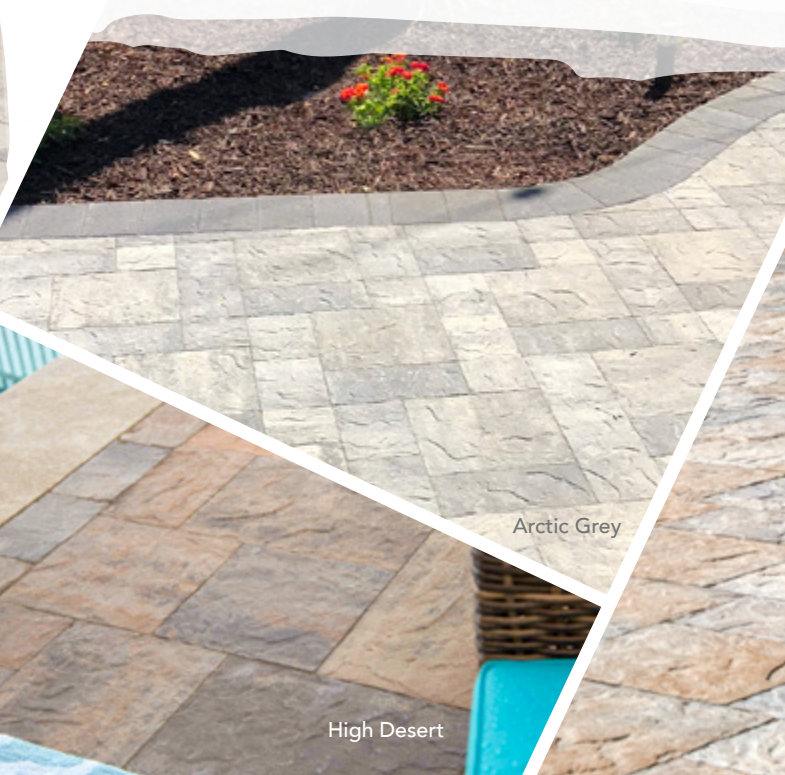
The surface is easy to clean.

The base is made up of high-strength concrete, providing long-lasting compressive strength.



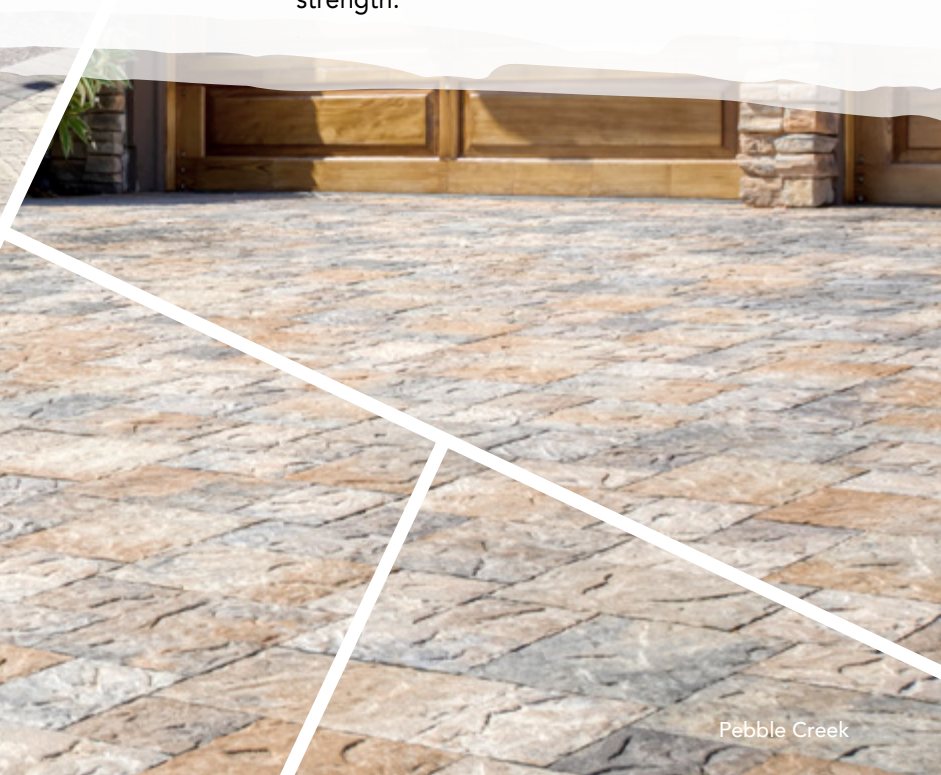
High Desert

**PATTERNS** / See page 68 or basalite.com



Arctic Grey

High Desert



Pebble Creek



Name	Metric Units	U.S. Customary Units	Weight	Units/Pallet	Weight/Pallet	Sq. Ft./Pallet
6x6	148mm W x 148mm L x 60mm H	5.83" W x 5.83" L x 2.375" H	7 lbs	432	3054 lbs	108
6x9	148mm W x 223mm L x 60mm H	5.83" W x 8.78" L x 2.375" H	9.4 lbs	270	2568 lbs	99
6x12	148mm W x 298mm L x 60mm H	5.83" W x 11.73" L x 2.375" H	13.5 lbs	216	2946 lbs	108
9x12	223mm W x 298mm L x 60mm H	8.78" W x 11.73" L x 2.375" H	18.75 lbs	144	2730 lbs	108
12x12	298mm W x 298mm L x 60mm H	11.73" W x 11.73" L x 2.375" H	26 lbs	108	2838 lbs	108
12x18	298mm W x 448mm L x 60mm H	11.73" W x 17.64" L x 2.375" H	37.5 lbs	72	2730 lbs	108

For design consideration add 1.5mm or .06" to the W and L dimensions to allow for the spacers.



ARCTIC GREY



HIGH DESERT



PEBBLE CREEK



ECHO SUMMIT



RIFLE  
6x9 Border

Printed colors shown in this brochure may vary from actual product colors. We recommend selecting colors from actual product samples.

# PREMIER SMOOTH COMBO



### DESIGN FEATURE

Modular paver systems let you create your very own unique pattern.



San Remo with Rifle Border

**PATTERNS** / See page 67 or [basalite.com](http://basalite.com)

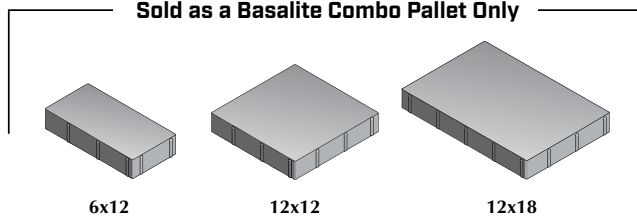


Positano



Verona

### Sold as a Basalite Combo Pallet Only



6x12

12x12

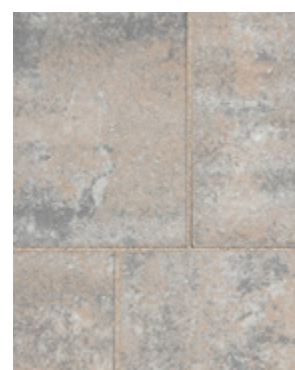
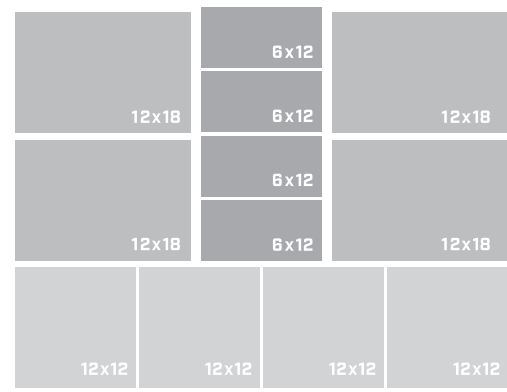
12x18

6x9 Border\*

Name	Metric Units	U.S. Customary Units	Weight/ Pallet	Sq. Ft./ Pallet
6x12	148mm W x 298mm L x 60mm H	5.83" W x 11.73" L x 2.375" H	2730 lbs	108
12x12	298mm W x 298mm L x 60mm H	11.73" W x 11.73" L x 2.375" H		
12x18	298mm W x 448mm L x 60mm H	11.73" W x 17.64" L x 2.375" H		
6x9 Border*	148mm W x 223mm L x 60mm H	5.83" W x 8.78" L x 2.375" H	2568 lbs	99

### Pallet Configuration

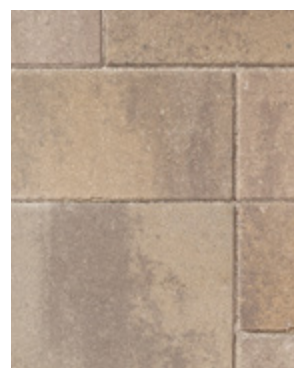
One pallet layer = 4 (6x12) - 4 (12x12) - 4 (12x18)  
9 layers per pallet



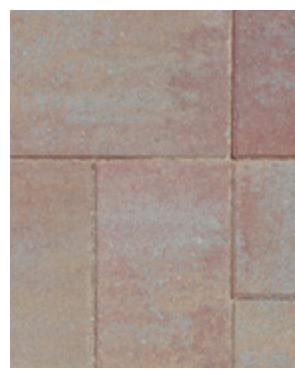
**POSITANO**



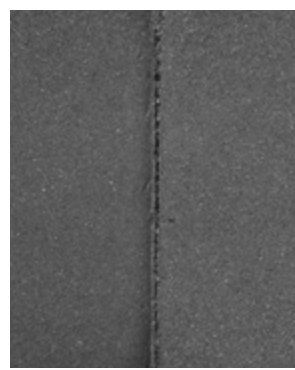
**TORINO**



**VERONA**



**SAN REMO**



**RIFLE  
6x9 Border**

Printed colors shown in this brochure may vary from actual product colors. We recommend selecting colors from actual product samples.



# PREMIER SMOOTH



Torino

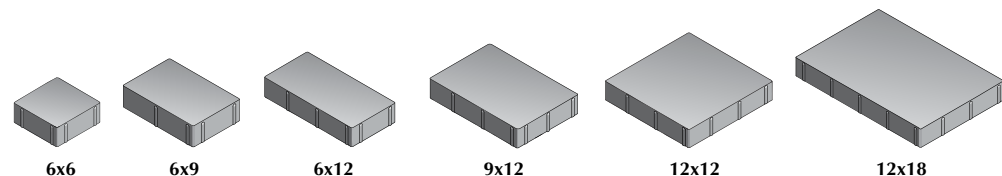
**PATTERNS** / See page 66 or [basalite.com](http://basalite.com)



**DESIGN IDEA**  
Include a fire pit to complete your dream space.

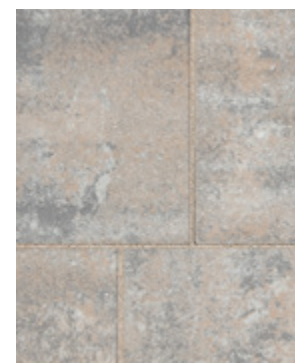


Positano



Name	Metric Units	U.S. Customary Units	Weight	Units/Pallet	Weight/Pallet	Sq. Ft./Pallet
6x6	148mm W x 148mm L x 60mm H	5.83" W x 5.83" L x 2.375" H	7 lbs	432	3054 lbs	108
6x9	148mm W x 223mm L x 60mm H	5.83" W x 8.78" L x 2.375" H	9.4 lbs	270	2568 lbs	99
6x12	148mm W x 298mm L x 60mm H	5.83" W x 11.73" L x 2.375" H	13.5 lbs	216	2946 lbs	108
9x12	223mm W x 298mm L x 60mm H	8.78" W x 11.73" L x 2.375" H	18.75 lbs	144	2730 lbs	108
12x12	298mm W x 298mm L x 60mm H	11.73" W x 11.73" L x 2.375" H	26 lbs	108	2838 lbs	108
12x18	298mm W x 448mm L x 60mm H	11.73" W x 17.64" L x 2.375" H	37.5 lbs	72	2730 lbs	108

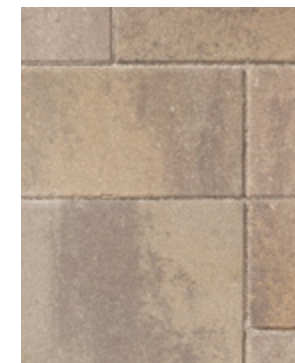
For design consideration add 1.5mm or .06" to the W and L dimensions to allow for the spacers.



**POSITANO**



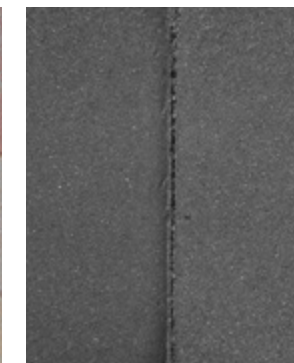
**TORINO**



**VERONA**



**SAN REMO**



**RIFLE**  
6x9 Border

Printed colors shown in this brochure may vary from actual product colors. We recommend selecting colors from actual product samples.

# PREMIER SLATE



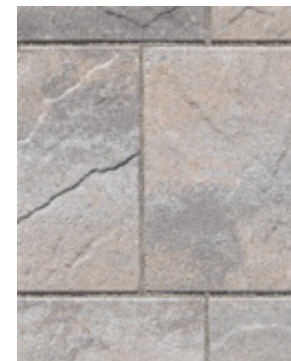
**DESIGN IDEA**

Make your space unique by using a sailor and soldier patterned border.



Name	Metric Units	U.S. Customary Units	Weight	Units/Pallet	Weight/Pallet	Sq. Ft./Pallet
6x6	148mm W x 148mm L x 60mm H	5.83" W x 5.83" L x 2.375" H	7 lbs	432	3054 lbs	108
6x9	148mm W x 223mm L x 60mm H	5.83" W x 8.78" L x 2.375" H	9.4 lbs	270	2568 lbs	99
6x12	148mm W x 298mm L x 60mm H	5.83" W x 11.73" L x 2.375" H	13.5 lbs	216	2946 lbs	108
9x12	223mm W x 298mm L x 60mm H	8.78" W x 11.73" L x 2.375" H	18.75 lbs	144	2730 lbs	108
12x12	298mm W x 298mm L x 60mm H	11.73" W x 11.73" L x 2.375" H	26 lbs	108	2838 lbs	108
12x18	298mm W x 448mm L x 60mm H	11.73" W x 17.64" L x 2.375" H	37.5 lbs	72	2730 lbs	108

For design consideration add 1.5mm or .06" to the W and L dimensions to allow for the spacers.



POSITANO



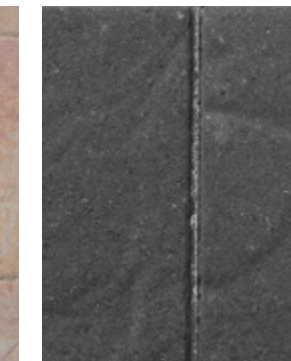
TORINO



VERONA



SAN REMO



RIFLE  
6x9 Border

Printed colors shown in this brochure may vary from actual product colors. We recommend selecting colors from actual product samples.

# ITALIAN RENAISSANCE PREMIER



Positano

**PATTERNS** / See page 66  
or [basalite.com](http://basalite.com)

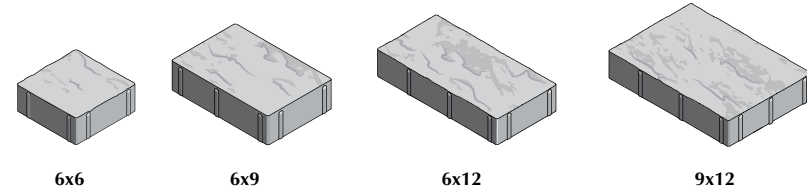


Torino



## DESIGN IDEA

Gain dramatic appeal by combining texture and color that complement your home's exterior.



6x6

6x9

6x12

9x12

Name	Metric Units	U.S. Customary Units	Weight	Units/Pallet	Weight/Pallet	Sq. Ft./Pallet
6x6	148mm W x 148mm L x 60mm H	5.83" W x 5.83" L x 2.375" H	7 lbs	432	3054 lbs	108
6x9	148mm W x 223mm L x 60mm H	5.83" W x 8.78" L x 2.375" H	9.4 lbs	270	2568 lbs	99
6x12	148mm W x 298mm L x 60mm H	5.83" W x 11.73" L x 2.375" H	13.5 lbs	216	2946 lbs	108
9x12	223mm W x 298mm L x 60mm H	8.78" W x 11.73" L x 2.375" H	18.75 lbs	144	2730 lbs	108

For design consideration add 1.5mm or .06" to the W and L dimensions to allow for the spacers.



POSITANO



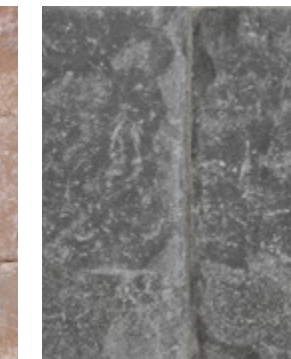
TORINO



VERONA



SAN REMO



RIFLE  
6x9 Border

Printed colors shown in this brochure may vary from actual product colors. We recommend selecting colors from actual product samples.

# MISSION



Torino

**PATTERNS** / Online at [basalite.com](http://basalite.com)

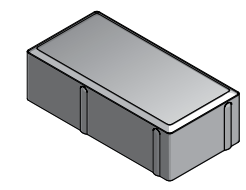


Custom Color Blend

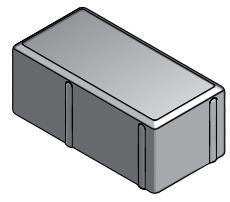
Torino



**DESIGN IDEA**  
Custom colors, levels and lighting define your own ultimate space.

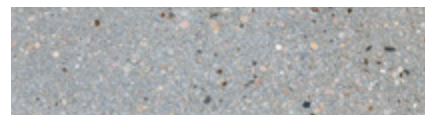


4x8x60



4x8x80\*

**ALSO AVAILABLE IN CUSTOM FINISHES:**



Groundface - Vail



Shotblast - Vail

Name	Metric Units	U.S. Customary Units	Weight	Units/Pallet	Weight/Pallet	Sq. Ft./Pallet
4x8x60	98mm W x 198mm L x 60mm H	3.85" W x 7.795" L x 2.375" H	6 lbs	486	2946 lbs	108
4x8x60 HB	98mm W x 198mm L x 60mm H	3.85" W x 7.795" L x 2.375" H	6 lbs	442	2622 lbs	96
4x8x80* HB	98mm W x 198mm L x 80mm H	3.85" W x 7.795" L x 3.149" H	8 lbs	432	3486 lbs	96



**POSITANO TORINO VERONA SAN REMO VAIL ASPEN FRISCO RIFLE**

Printed colors shown in this brochure may vary from actual product colors. We recommend selecting colors from actual product samples.

# CITYSCAPE SERIES



## DESIGN IDEA

The Cityscape Series is ideal for a rooftop lounge, patio or terrace. When used with a pedestal system, utility systems reside below and out of site.



Aspen

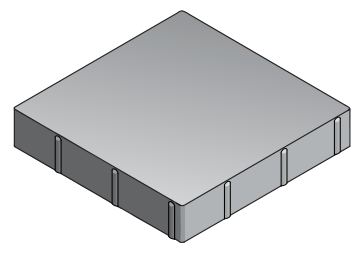


Custom Color

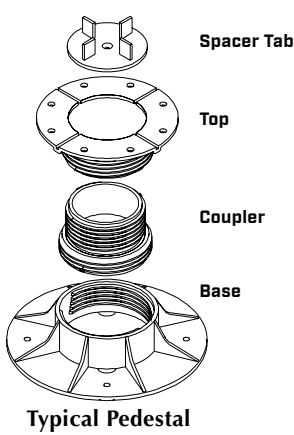


Aspen and Frisco

**PATTERNS** / Online at [basalite.com](http://basalite.com)

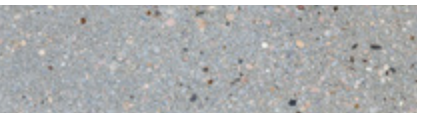


24x24

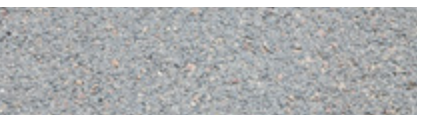


Typical Pedestal

### ALSO AVAILABLE IN CUSTOM FINISHES:

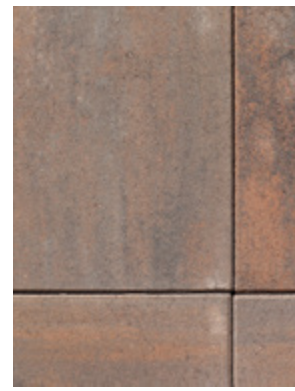


Groundface - Vail

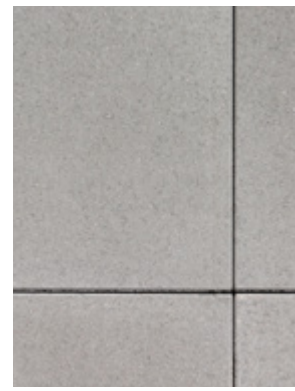


Shotblast - Vail

### NEW COLOR AVAILABLE



POSITANO



VAIL



ASPEN



FRISCO



RIFLE

Name	Metric Units	U.S. Customary Units	Weight	Units/Pallet	Weight/Pallet	Sq. Ft./Pallet
24x24	608mm W x 608mm L x 60mm H	23.94" W x 23.94" L x 2.375" H	107 lbs	24	2598 lbs	96

For design consideration add 1.5mm or .06" to the W and L dimensions to allow for the spacers.

Printed colors shown in this brochure may vary from actual product colors. We recommend selecting colors from actual product samples.

# PLANK PAVERS

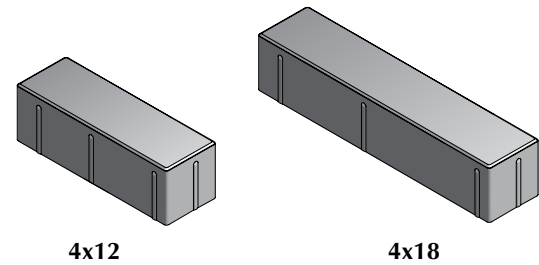


**DESIGN FEATURE**  
Our 102mm Plank Paver is suitable for light-duty and commercial vehicular projects.

*PATTERNS* / Online at [basalite.com](http://basalite.com)

Custom color blend

Vail, Aspen and Rifle



4x12

4x18

**ALSO AVAILABLE IN CUSTOM FINISHES:**



Groundface - Vail



Shotblast - Vail

Name	Metric Units	U.S. Customary Units	Weight	Units/Pallet	Weight/Pallet	Sq. Ft./Pallet
4x12	102mm W x 457mm L x 102mm H	4" W x 12" L x 4" H	11 lbs	288	3203 lbs	96
4x18	102mm W x 457mm L x 102mm H	4" W x 18" L x 4" H	16 lbs	176	2851 lbs	88

For design consideration add 1.5mm or .06" to the W and L dimensions to allow for the spacers.



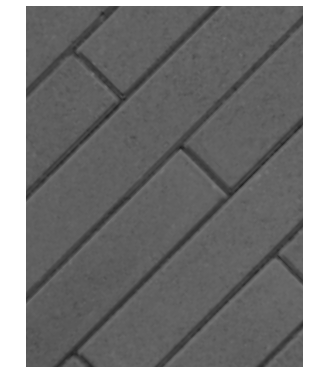
VAIL



ASPEN



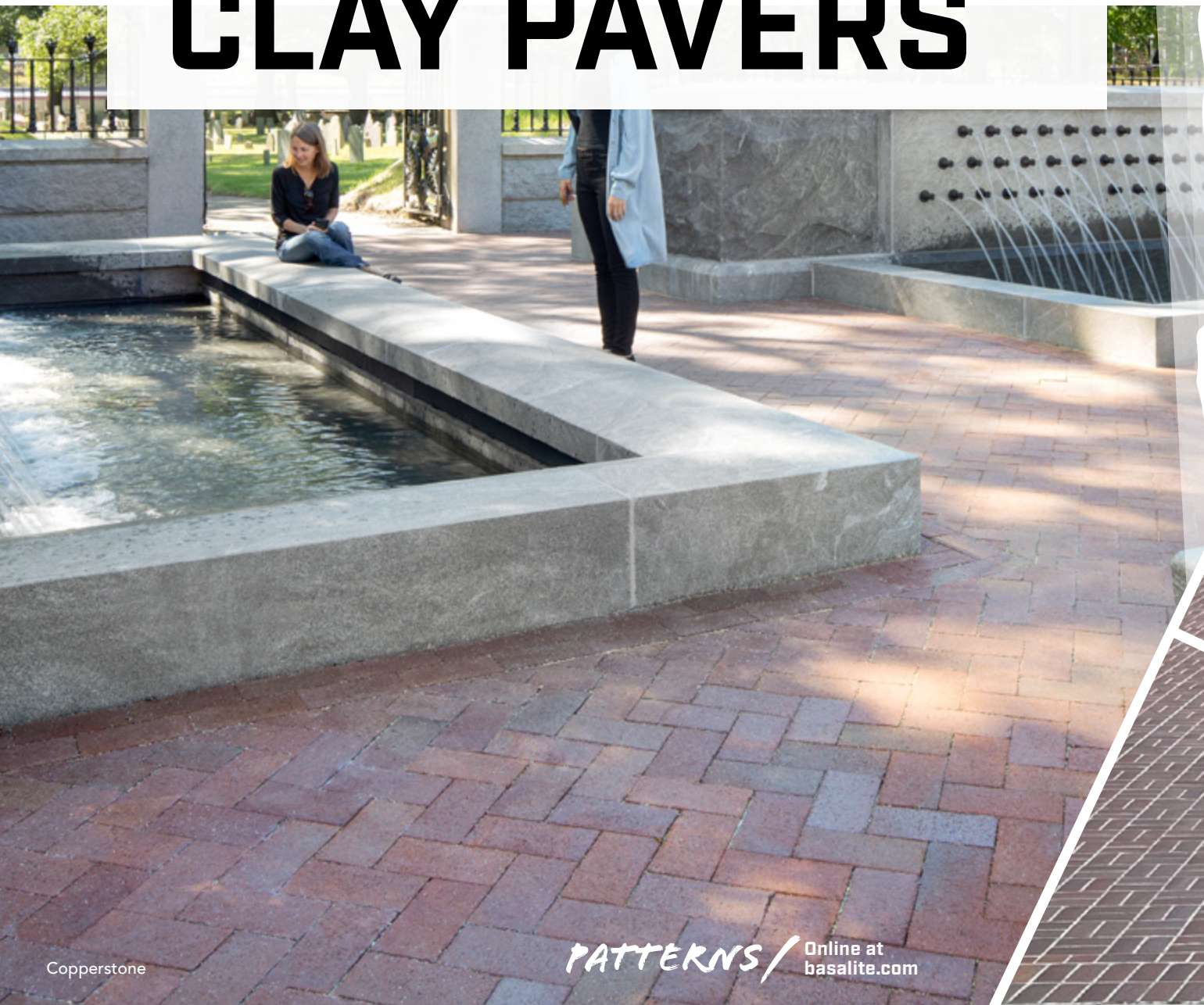
FRISCO



RIFLE

Printed colors shown in this brochure may vary from actual product colors. We recommend selecting colors from actual product samples.

# INTERSTATE<sup>®</sup> BRICK CLAY PAVERS



Copperstone

**PATTERNS** / Online at [basalite.com](http://basalite.com)



Custom colors

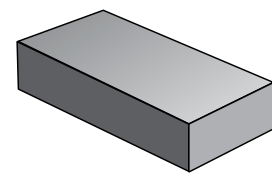


## DESIGN IDEA

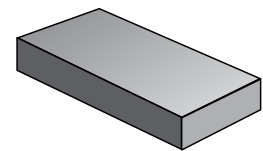
Clay pavers can be laid face up or on their side providing a unique design.



Bronzestone



4x8 True/Tumbled



4x8 Split

Name	Metric Units	U.S. Customary Units	Weight	Bricks/Cube	Weight/Cube	Sq. Ft./Cube
4x8 True	102mm W x 203mm L x 57mm H	4" W x 8" L x 2.25" H	5.4 lbs	500	2730 lbs	111
4x8 True Tumbled	102mm W x 203mm L x 57mm H	4" W x 8" L x 2.25" H	5.4 lbs	500	2730 lbs	111
4x8 True Split	102mm W x 203mm L x 32mm H	4" W x 8" L x 1.25" H	2.9 lbs	664	1956 lbs	147.5



BRONZESTONE COPPERSTONE

TERRA  
COTTA

MOUNTAIN  
RED

IRONSTONE

MIDNIGHT  
BLACK

Contact your sales rep or local dealer for additional colors. Printed colors shown in this brochure may vary from actual product colors. We recommend selecting colors from actual product samples.

# SPEC PAVE 100



**DESIGN FEATURE**

Permeable Pavers allow water to drain naturally into the surface, reducing storm water run-off and its contaminants from entering our waterways.



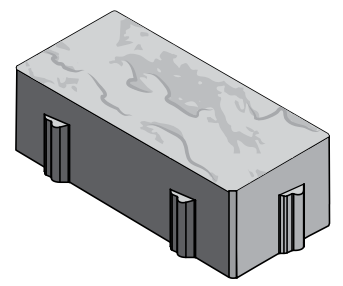
Custom color



Positano



Positano



100mm

**PATTERNS /** Machine lay configuration is standard. Pallet includes six half pavers per layer.

Name	Metric Units	U.S. Customary Units	Weight	Units/Pallet	Weight/Pallet	Sq. Ft./Pallet
100mm	140mm W x 279mm L x 100mm H	5.5" W x 11" L x 3.94" H	18 lbs	192	3486 lbs	86



POSITANO



TORINO



VERONA



SAN REMO

Printed colors shown in this brochure may vary from actual product colors. We recommend selecting colors from actual product samples.



# ALLAN BLOCK AB<sup>®</sup> COLLECTION

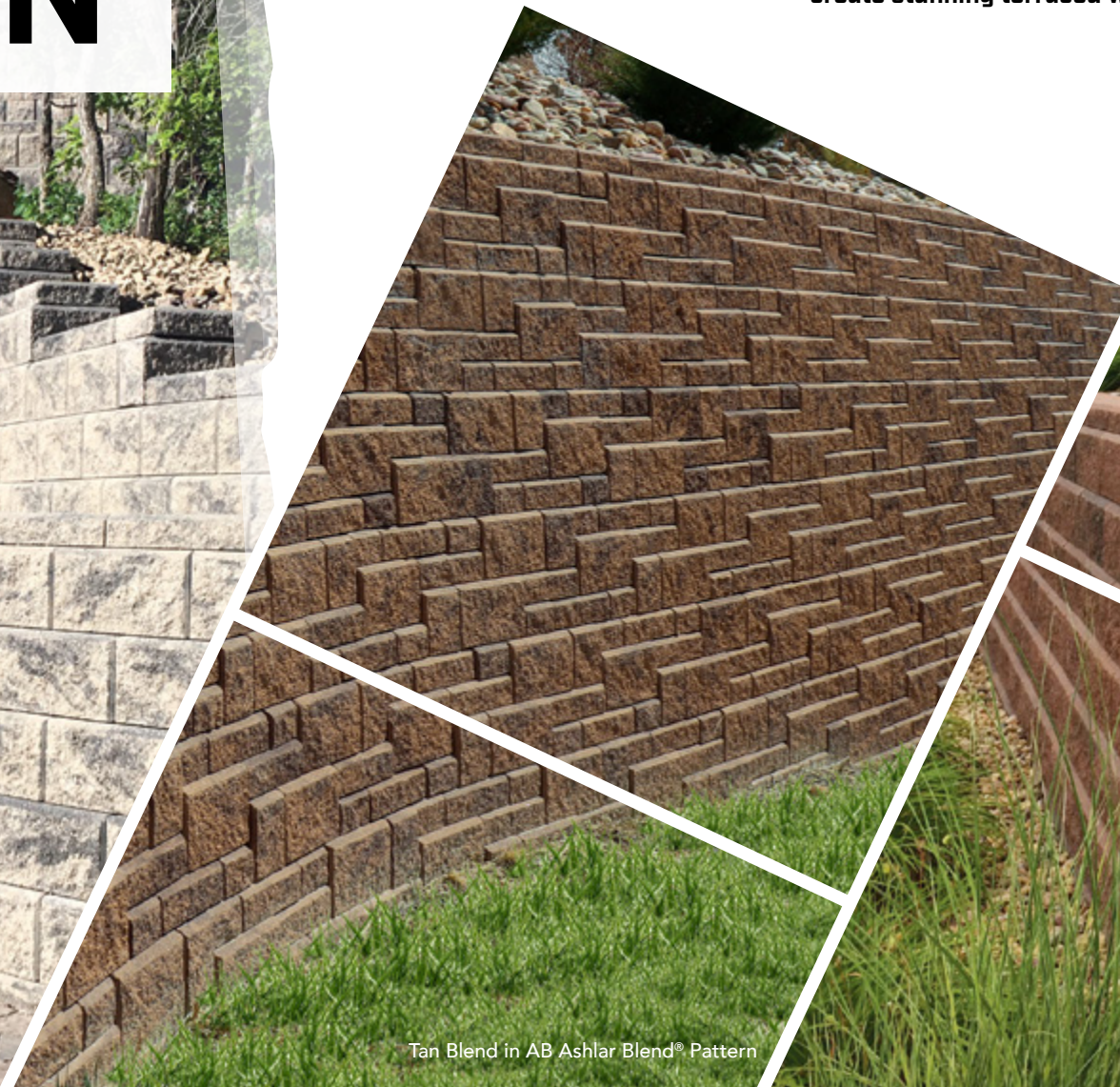


**DESIGN IDEA**

Use AB<sup>®</sup> Collection retaining walls to create stunning terraced walls.



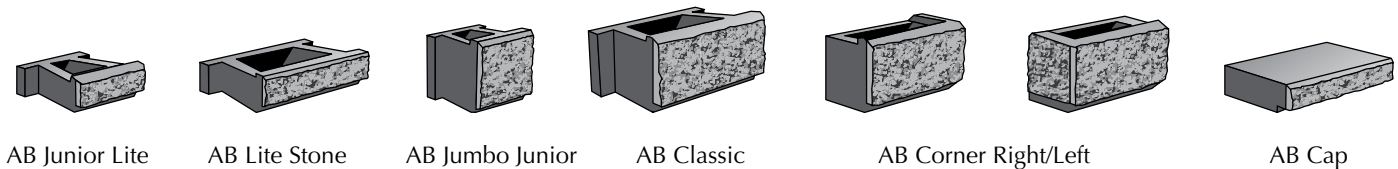
Grey Blend in AB Classic



Tan Blend in AB Ashlar Blend<sup>®</sup> Pattern



Red Blend in AB Classic



AB Junior Lite    AB Lite Stone    AB Jumbo Junior    AB Classic    AB Corner Right/Left    AB Cap

Name	Metric Units	U.S. Customary Units	Weight	Units/Pallet	Weight/Pallet
AB Junior Lite	102mm H x 254mm W x 229mm L	4" H x 10" W x 9" L	23 lbs	128	2974 lbs
AB Lite Stone	102mm H x 305mm W x 457mm L	4" H x 12" W x 18" L	35 lbs	64	2270 lbs
AB Jumbo Junior	203mm H x 242mm W x 229mm L	8" H x 9.5" W x 9" L	35 lbs	64	2830 lbs
AB Classic	203mm H x 305mm W x 457mm L	8" H x 12" W x 18" L	75 lbs	32	2430 lbs
*AB Corners	203mm H x 203mm W x 406mm L	8" H x 8" W x 16" L	50 lbs	30L, 30R	3030 lbs
AB Cap	102mm H x 305mm W x 457mm L	4" H x 12" W x 18" L	55 lbs	64	3550 lbs

\*AB Corners are sold per pair only, one left and one right



**TAN BLEND**



**GREY BLEND**  
AB Ashlar Blend<sup>™</sup> Pattern



**RED BLEND**  
AB Ashlar Blend<sup>™</sup> Pattern

Units are packaged separately to allow them to be used individually or blend them together to create the AB Ashlar Blend<sup>™</sup> patterned wall. All units are engineered with a 6° setback. See page 67 for pattern configuration.

Printed colors shown in this brochure may vary from actual product colors. We recommend selecting colors from actual product samples.

# AB AZTEC™ COLLECTION



## DESIGN FEATURE

All Allan Block SRW walls are produced with a raised lip and notch to lock each block in place and create a consistent setback without the use of pins or mechanical connectors.

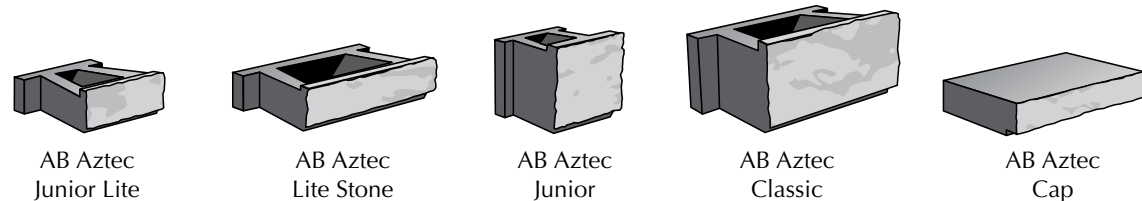


Grey Blend in AB Classic



Grey Blend in AB Classic

Grey Blend in AB Ashlar Pattern



AB Aztec Junior Lite

AB Aztec Lite Stone

AB Aztec Junior

AB Aztec Classic

AB Aztec Cap

Name	Metric Units	U.S. Customary Units	Weight	Units/Pallet	Weight/Pallet
AB Aztec Junior Lite	102mm H x 254mm W x 229mm L	4" H x 10" W x 9" L	15 lbs	128	1950 lbs
AB Aztec Lite Stone	102mm H x 305mm W x 457mm L	4" H x 12" W x 18" L	35 lbs	64	2270 lbs
AB Aztec Junior	203mm H x 242mm W x 229mm L	8" H x 9.5" W x 9" L	35 lbs	64	2270 lbs
AB Aztec Classic	203mm H x 305mm W x 457mm L	8" H x 12" W x 18" L	75 lbs	32	2430 lbs
AB Aztec Cap	102mm H x 305mm W x 457mm L	4" H x 12" W x 18" L	55 lbs	64	3550 lbs

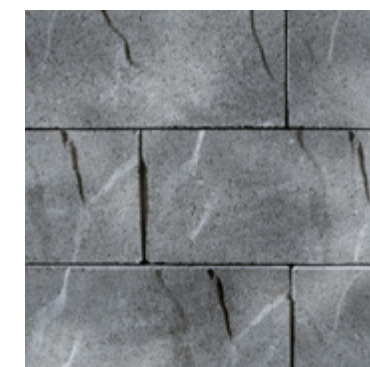
## NEW COLOR AVAILABLE



POSITANO



TAN BLEND



GREY BLEND

Units are packaged separately to allow them to be used individually or blend them together to create the AB Aztec Ashlar Blend Pattern™ patterned wall. All units are engineered with a 6° setback. See page 67 for pattern configuration.

Printed colors shown in this brochure may vary from actual product colors. We recommend selecting colors from actual product samples.

# AB EUROPA<sup>®</sup> COLLECTION



## DESIGN IDEA

Incorporate planters into your design to add color and texture with flowers and shrubs.



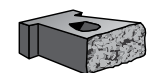
Tan Blend in Abbey Pattern



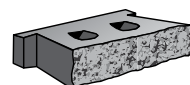
Grey Blend in Abbey Pattern



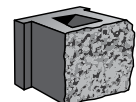
Tan Blend in Abbey Pattern



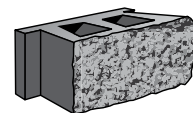
AB Bordeaux



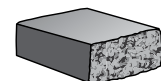
AB Barcelona



AB Palermo



AB Dover



AB Europa  
Cap

Name	Metric Units	U.S. Customary Units	Weight	Units/Pallet	Weight/Pallet
AB Bordeaux	102mm H x 267mm W x 229mm L	4" H x 10.5" W x 9" L	23 lbs	128	2974 lbs
AB Barcelona	102mm H x 267mm W x 457mm L	4" H x 10.5" W x 18" L	35 lbs	64	2270 lbs
AB Palermo	203mm H x 242mm W x 229mm L	8" H x 9.5" W x 9" L	35 lbs	64	2270 lbs
AB Dover	203mm H x 304mm W x 457mm L	8" H x 12" W x 18" L	75 lbs	32	2430 lbs
AB Europa Cap	102mm H x 279mm W x 457mm L	4" H x 11" W x 18" L	50 lbs	60	3030 lbs



**TAN BLEND**  
AB Abbey Blend™ Pattern



**GREY BLEND**  
AB Abbey Blend™ Pattern



**RED BLEND**  
AB Abbey Blend™ Pattern

Units are packaged separately to allow them to be used individually or blend them together to create the AB Abbey Blend™ patterned wall. All units are engineered with a 6° setback. See page 67 for pattern configuration.

Printed colors shown in this brochure may vary from actual product colors. We recommend selecting colors from actual product samples.

# AB<sup>®</sup> COURTYARD & AB<sup>®</sup> OLD COUNTRY COURTYARD



### DESIGN IDEA

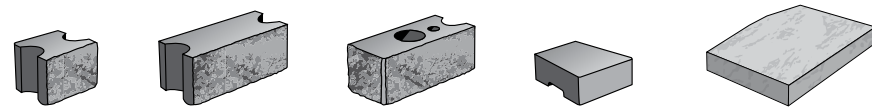
AB Courtyard<sup>®</sup> freestanding units have textured sides for ending walls and incorporating columns without cutting.



Custom Blend AB Courtyard



Grey Blend AB Courtyard



AB York    AB Dublin    AB Corner Block    AB Wall Cap    AB Post Cap\*

### AVAILABLE FINISHES:

Untumbled AB<sup>®</sup> Courtyard

Tumbled AB<sup>®</sup> Old Country Courtyard

Name	Metric Units	U.S. Customary Units	Weight	Units/Pallet	Weight/Pallet
AB York	152mm H x 178mm W x 229mm L	6" H x 7" W x 9" L	20 lbs	144	2915 lbs
AB Dublin	152mm H x 178mm W x 419mm L	6" H x 7" W x 16.5" L	39 lbs	72	2838 lbs
AB Corner Block	152mm H x 178mm W x 241mm L	6" H x 7" W x 9.5" L	42 lbs	72	3059 lbs
AB Wall Cap	89mm H x 254mm W x 178/235 mm L	3.5" H x 10" W x 7/9.25" L	22 lbs	120	2670 lbs
AB Post Cap*	75mm H x 300mm W x 610mm L	3" H x 12" W x 24" L	70 lbs	36	2555 lbs

Each wall post requires 4 Corner Blocks per layer/course. \*Two caps needed per post.



AB COURTYARD  
TAN BLEND



AB COURTYARD  
GREY BLEND



AB COURTYARD  
RED BLEND

Units are packaged separately to allow them to be used individually or blend them together for a variety of patterns. Use the AB Dublin for straight walls and the AB York for building curved walls.

Printed colors shown in this brochure may vary from actual product colors. We recommend selecting colors from actual product samples.

# ALLAN BLOCK® FENCE™



## DESIGN FEATURE

AB Fence blocks are produced with one split-face and one comb-face side. Alternate block faces between split-face and comb-face to create architecture appeal and a higher aesthetic.

WALL SYSTEMS / SPLIT-FACE & COMB-FACE



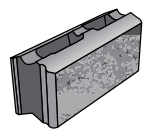
Grey Blend and No. 400 in Classic Pattern



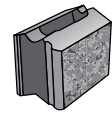
Tan Blend in AB Ashlar Pattern



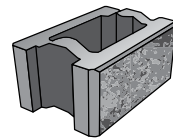
Tan Blend in AB Ashlar Pattern



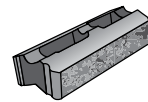
AB Fence Panel



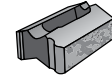
AB Fence Half Panel



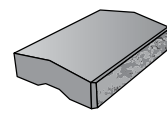
AB Fence Post



AB Fence Lite Panel



AB Fence Half Lite Panel



AB Fence Cap

Name	Metric Units	U.S. Customary Units	Weight	Units/Pallet	Weight/Pallet
AB Fence Panel	203mm H x 152mm W x 457mm L	8" H x 6" W x 18" L	50 lbs	64	3230 lbs
AB Fence Half Panel	203mm H x 152mm W x 229mm L	8" H x 6" W x 9" L	25 lbs	128	3230 lbs
AB Fence Post	203mm H x 305mm W x 457mm L	8" H x 12" W x 18" L	70 lbs	32	2270 lbs
AB Fence Lite Panel	102mm H x 152mm W x 457mm L	4" H x 6" W x 18" L	25 lbs	128	3230 lbs
AB Fence Half Lite Panel	102mm H x 152mm W x 229mm L	4" H x 6" W x 9" L	11.5 lbs	256	2974 lbs
AB Fence Cap	127mm H x 305mm W x 457mm L	5" H x 12" W x 18" L	60 lbs	64	3870 lbs



TAN BLEND

GREY BLEND

RED BLEND

No. 385

No. 386

No. 400

Units are packaged separately to allow them to be used individually or blend them together to create the AB Ashlar Blend™ patterned wall. Printed colors shown in this brochure may vary from actual product colors. We recommend selecting colors from actual product samples.

# CONTEMPORARY & RUSTIC WALL



## DESIGN IDEA

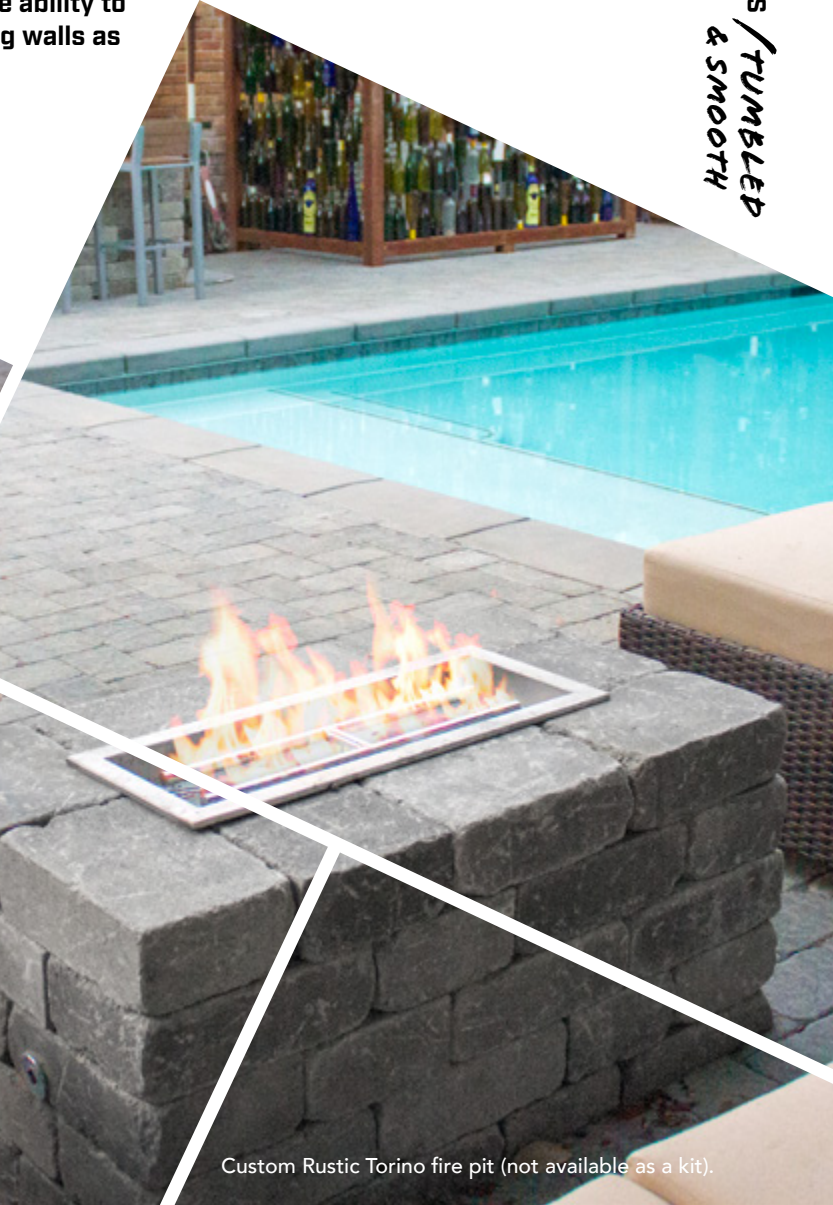
A versatile wall system with the ability to create freestanding or retaining walls as well as Outdoor Living Kits.



Torino

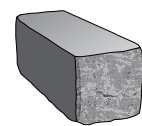


Positano

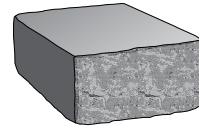


Custom Rustic Torino fire pit (not available as a kit).

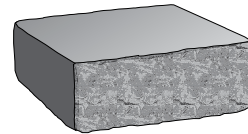
Sold as a Basalite Combo Pallet Only



Small



Medium



Standard\*

### AVAILABLE FINISHES:

Untumbled Contemporary Wall

Tumbled Rustic Wall

Name	Metric Units	U.S. Customary Units	Weight	Units/Pallet	Weight/Pallet
Rustic/Contemporary Small	102mm H x 203mm W x 102mm L	4" H x 8" W x 4" L	10 lbs	80	2435 lbs
Rustic/Contemporary Medium	102mm H x 203mm W x 203mm L	4" H x 8" W x 8" L	20 lbs	80	
Rustic/Contemporary Standard*	102mm H x 203mm W x 305mm L	4" H x 8" W x 12" L	32 lbs	80	2590 lbs

\*Standard is palletized and sold separately.



RUSTIC WALL POSITANO



RUSTIC WALL TORINO



RUSTIC WALL VERONA



RUSTIC WALL RIFLE

# RECON BLOCK



Grey Rock



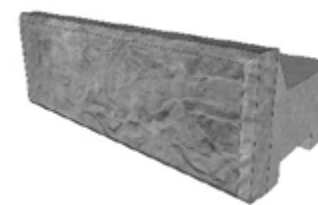
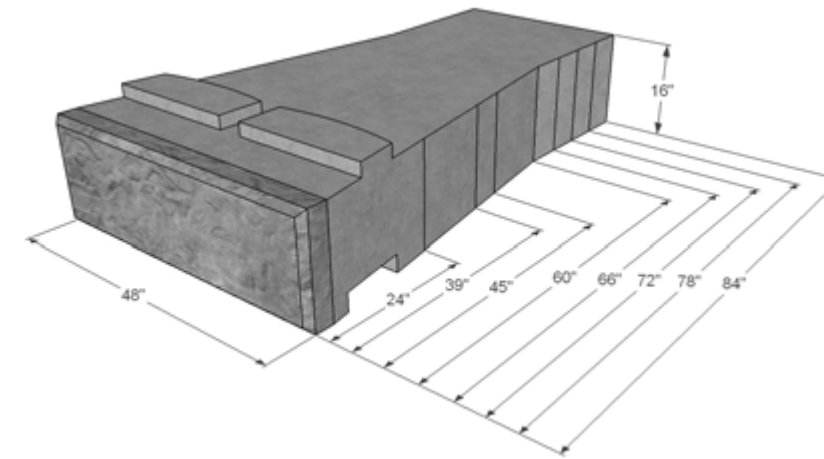
**GREY ROCK**



**SANDSTONE**

Additional color options can be provided with post applied staining. Stains are readily available and easily applied in the field to achieve a natural look that will last for years.

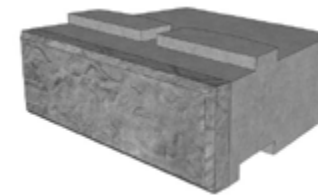
Printed colors shown in this brochure vary from actual product colors. We recommend selecting colors from actual product samples.



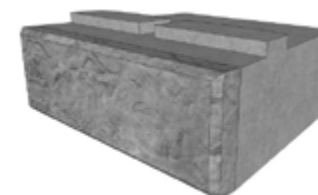
Top Block



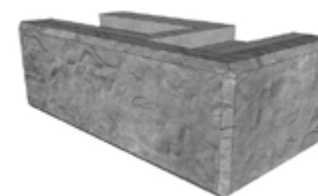
Full High Cap



Middle Block



Base Block



Reversible Corner Block



**WEATHERED EDGE**  
Stock Texture



**NORTH SHORE GRANITE**  
Special Order Texture

Name	Metric Units	U.S. Customary Units	Weight/ Pallet	Sq. Ft./Each
24T	40.6cm H x 61cm W x 121.9cm L	16" H x 24" W x 48" L	983 lbs	5.33
FHC	40.6cm H x 61cm W x 121.9cm L	16" H x 24" W x 48" L	1450 lbs	5.33

Name	Metric Units	U.S. Customary Units	Weight/ Pallet	Sq. Ft./Each
24M/24B	40.6cm H x 61cm W x 121.9cm L	16" H x 24" W x 48" L	1456 lbs	5.33
39M/39B	40.6cm H x 99.1cm W x 121.9cm L	16" H x 39" W x 48" L	2277 lbs	5.33
45M/45B	40.6cm H x 114.3cm W x 121.9cm L	16" H x 45" W x 48" L	2549 lbs	5.33
60M/60B	40.6cm H x 152.4cm W x 121.9cm L	16" H x 60" W x 48" L	3173 lbs	5.33
66M/66B	40.6cm H x 167.6cm W x 121.9cm L	16" H x 66" W x 48" L	3416 lbs	5.33
72M/72B	40.6cm H x 182.9cm W x 121.9cm L	16" H x 72" W x 48" L	3660 lbs	5.33
78M/78B	40.6cm H x 198.1cm W x 121.9cm L	16" H x 78" W x 48" L	3902 lbs	5.33
84M/84B	40.6cm H x 213.4cm W x 121.9cm L	16" H x 84" W x 48" L	4146 lbs	5.33

Name	Metric Units	U.S. Customary Units	Weight/ Pallet	Sq. Ft./Each
C	40.6cm H x 61cm W x 121.9cm L	16" H x 24" W x 48" L	1401 lbs	8.00

# ROSETTA<sup>®</sup> OUTCROPPING



## DESIGN FEATURE

The look you want without sacrificing the structural system you need.



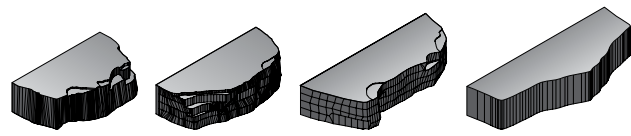
Sandstone



Custom Color

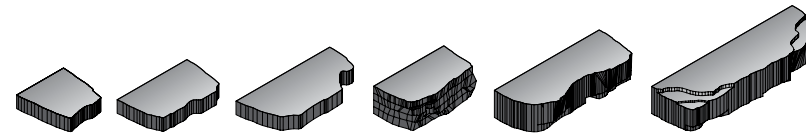


Custom Color



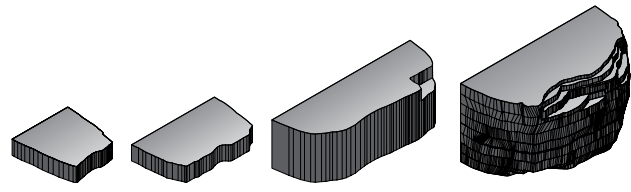
12 x 42    12 x 48    12 x 60    12 x 66

Pallet A



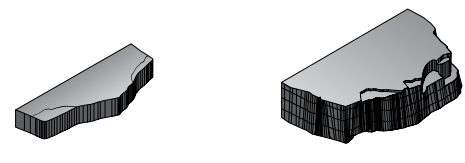
6 x 24    6 x 36    6 x 48    12 x 36    12 x 54    12 x 72

Pallet B



6 x 24    6 x 36    18 x 60    24 x 48

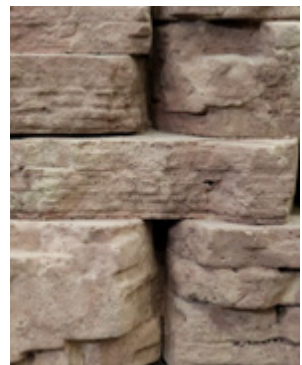
Pallet C



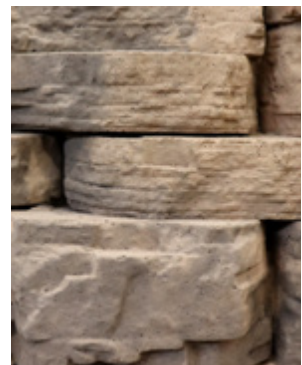
6" Corner

12" Corner

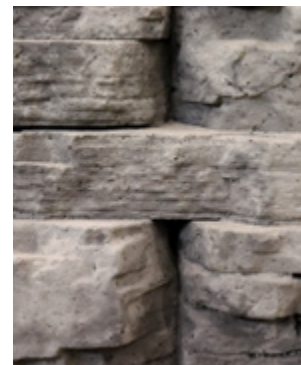
### NEW COLORS AVAILABLE



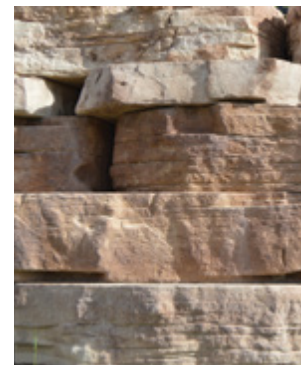
MORRISON



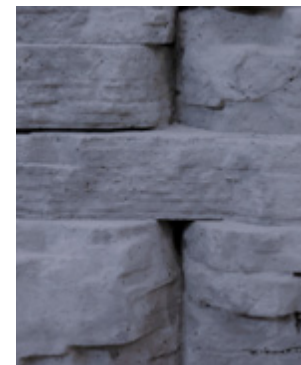
BAILEY



GUNNISON



SANDSTONE



CHARCOAL

Name	Metric Units	U.S. Customary Units	Weight	Units/Pallet	Weight/Pallet	Sq. Ft./Pallet
Pallet A	305mm W x 1067mm L	12" W x 42" L	749 lbs	1 in each size for a total of 4 pieces	3915 lbs	18
	305mm W x 1219mm L	12" W x 48" L	893 lbs			
	305mm W x 1524mm L	12" W x 60" L	1103 lbs			
	305mm W x 1676mm L	12" W x 66" L	1140 lbs			
Pallet B	152mm W x 610mm L	6" W x 24" L	250 lbs	1 in each size for a total of 6 pieces	3910 lbs	18
	152mm W x 914mm L	6" W x 36" L	324 lbs			
	152mm W x 1219mm L	6" W x 48" L	442 lbs			
	305mm W x 914mm L	12" W x 36" L	620 lbs			
	305mm W x 1372mm L	12" W x 54" L	950 lbs			
	305mm W x 1829mm L	12" W x 72" L	1294 lbs			
Pallet C	152mm W x 610mm L	6" W x 24" L	250 lbs	1 in each size for a total of 4 pieces	4038 lbs	18
	152mm W x 914mm L	6" W x 36" L	324 lbs			
	457mm W x 1524mm L	18" W x 60" L	1633 lbs			
	610mm W x 1219mm L	24" W x 48" L	1801 lbs			
6" Corner	686mm W x 990mm L	27" W x 39" L	480 lbs.	4	2015 lbs	11
12" Corner	762mm W x 1219mm L	30" W x 48" L	1170 lbs.	3	3600 lbs	19.5

Rosetta<sup>®</sup> Outcropping is sold in full pallet quantities in a ratio of 2A, 2B and 1C.

Printed colors shown in this brochure may vary from actual product colors. We recommend selecting colors from actual product samples

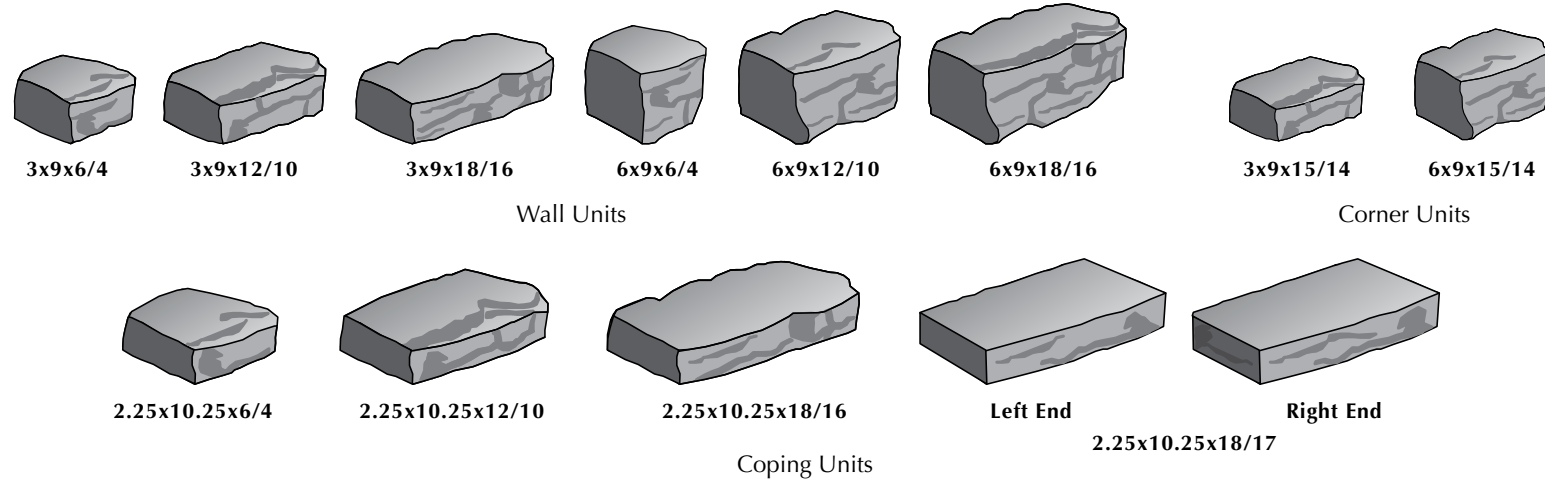


# ROSETTA<sup>®</sup> BELVEDERE



## DESIGN IDEA

Use as a seatwall with natural cap for a completely unique design.



### NEW COLORS AVAILABLE



MORRISON

BAILEY

GUNNISON

SANDSTONE

CHARCOAL

Name	Metric Units	U.S. Customary Units	Weight/Pallet	Units/Pallet	Sq. Ft./Pallet
Wall Units	76mm H x 305mm W x 152/102mm L	3" H x 9" W x 6/4" L	2470 lbs	12 in each size for a total of 72 pieces	27
	76mm H x 305mm W x 305/254mm L	3" H x 9" W x 12/10" L			
	76mm H x 305mm W x 457/406mm L	3" H x 9" W x 18/16" L			
	152mm H x 305mm W x 152/102mm L	6" H x 9" W x 6/4" L			
	152mm H x 152mm W x 305/254mm L	6" H x 9" W x 12/10" L			
	152mm H x 152mm W x 457/406mm L	6" H x 9" W x 18/16" L			
Coping Units	57mm H x 260mm W x 152/102mm L	2.25" H x 10.25" W x 6/4" L	1545 lbs	24 pieces each of Unit 1 and Unit 2, 12 pieces of Unit 3 and 6 pieces of each cap for a total of 72 pieces.	66 LF.
	57mm H x 260mm W x 305/254mm L	2.25" H x 10.25" W x 12/10" L			
	57mm H x 260mm W x 457/406mm L	2.25" H x 10.25" W x 18/16" L			
	57mm H x 260mm W x 457/432mm L	2.25" H x 10.25" W x 18/17" L			
	57mm H x 260mm W x 457/432mm L	2.25" H x 10.25" W x 18/17" L			
3" Corner	76mm H x 305mm W x 381/356mm L	3" H x 9" W x 15/14" L	1515 lbs	16 in each size for a total of 32 pieces	24
6" Corner	152mm H x 305mm W x 381/356mm L	6" H x 9" W x 15/14" L			
Column Cap	63.5mm H x 686mm W x 686mm L	2.5" H x 27" W x 27" L	1615 lbs	10 Piece Per Pallet	-

Rosetta<sup>®</sup> Belvedere Wall, Coping and Corners are sold in pallet quantities only. \*Column caps sold separately.

Printed colors shown in this brochure may vary from actual product colors. We recommend selecting colors from actual product samples

# ROSETTA<sup>®</sup> KODAH



**DESIGN FEATURE**  
The big, bold look for freestanding, retaining or garden walls.



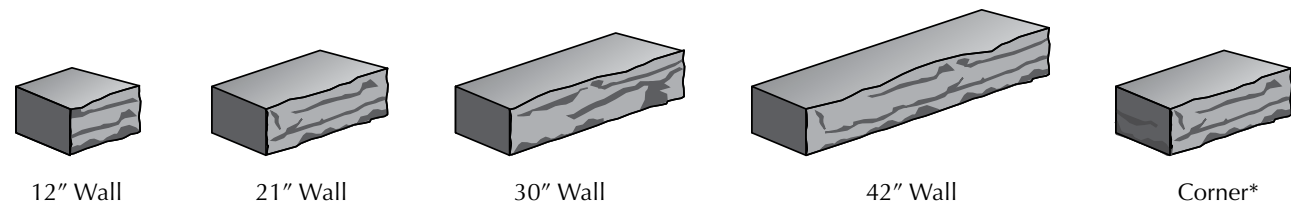
Sandstone



Charcoal



Sandstone



12" Wall      21" Wall      30" Wall      42" Wall      Corner\*

Name	Metric Units	U.S. Customary Units	Weight	Units/Pallet	Weight/Pallet	Sq. Ft./Pallet
12" Wall	152mm H x 267mm W x 305mm L	6" H x 10.5" W x 12" L	50 lbs	3	2500 lbs	21
21" Wall	152mm H x 267mm W x 533mm L	6" H x 10.5" W x 21" L	100 lbs	6		
30" Wall	152mm H x 267mm W x 762mm L	6" H x 10.5" W x 30" L	140 lbs	3		
42" Wall	152mm H x 267mm W x 1067mm L	6" H x 10.5" W x 42" L	200 lbs	6		
Corner*	152mm H x 267mm W x 533mm L	6" H x 10.5" W x 21" L	100 lbs	24	2500 lbs	31.5

Kodah Wall units are sold in full pallet quantities only. Three 12", six 21", three 30", and six 42" wall units are on one pallet, for a total of 18 pieces per pallet.  
\*Corners sold separately.

NEW COLORS AVAILABLE



MORRISON      BAILEY      GUNNISON      SANDSTONE      CHARCOAL

Printed colors shown in this brochure may vary from actual product colors. We recommend selecting colors from actual product samples.

# ROSETTA® STEP COLLECTION



**DESIGN FEATURE**

Works seamlessly with the Rosetta Outcropping wall system.



Morrison



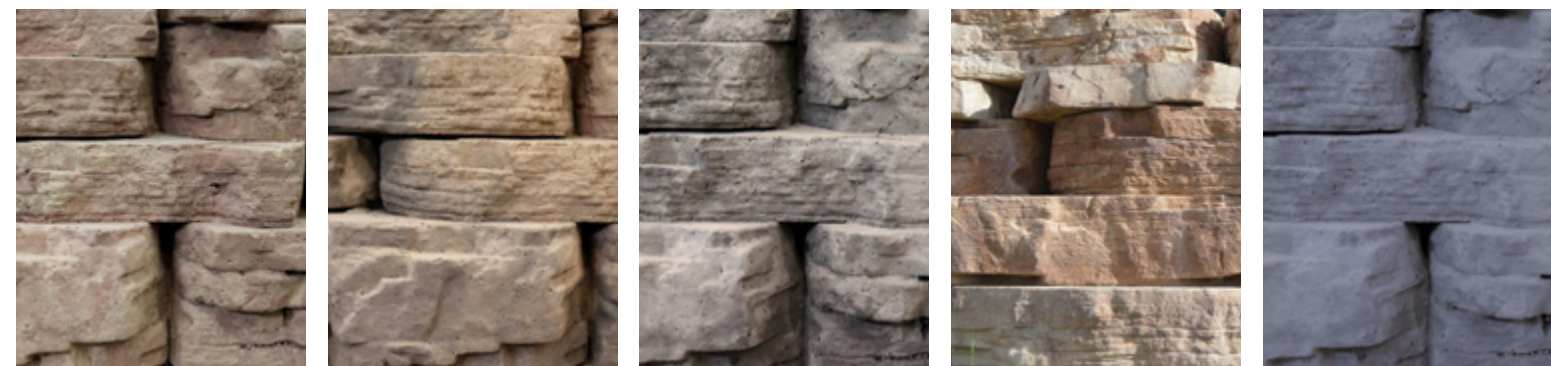
Sandstone



Irregular A   Irregular B   Irregular C   Irregular D   Irregular E   Irregular F   48" Dimensional   72" Dimensional

Name	Metric Units	U.S. Customary Units	Weight	Units/Pallet	Weight/Pallet
Irregular Step A	140mm H x 432mm W x 1077mm L	5.5" H x 1'-5" W x 3'-6" L	289 lbs	1 in each size for a total of 6 pieces	2447 lbs
Irregular Step B	140mm H x 559mm W x 1372mm L	5.5" H x 1'-10" W x 4'-6" L	391 lbs		
Irregular Step C	140mm H x 610mm W x 1219mm L	5.5" H x 2' W x 4' L	424 lbs		
Irregular Step D	140mm H x 610mm W x 1524mm L	5.5" H x 2' W x 5' L	508 lbs		
Irregular Step E	140mm H x 660mm W x 1067mm L	5.5" H x 2'-2" W x 3'-6" L	390 lbs		
Irregular Step F	140mm H x 711mm W x 1219mm L	5.5" H x 2'-4" W x 4' L	415 lbs		
48" Dimensional	178mm H x 457mm W x 1219mm L	7" H x 18" W x 48" L	455 lbs	6	2760 lbs
72" Dimensional	178mm H x 762mm W x 1829mm L	7" H x 30" W x 72" L	1320 lbs	3	3990 lbs

**NEW COLORS AVAILABLE**



MORRISON

BAILEY

GUNNISON

SANDSTONE

CHARCOAL

Printed colors shown in this brochure may vary from actual product colors. We recommend selecting colors from actual product samples.

# NECESSARIES™ THE KITCHEN™



**DESIGN FEATURE**

Each kit comes with everything you need to build!



Necessaries The Kitchen in Positano with Black Pearl granite countertop. Outdoor Pizza Oven and Green egg sold separately.



**POSITANO**



**VERONA**

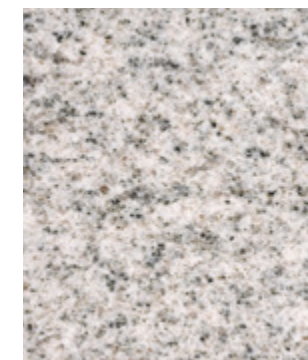


**TORINO**

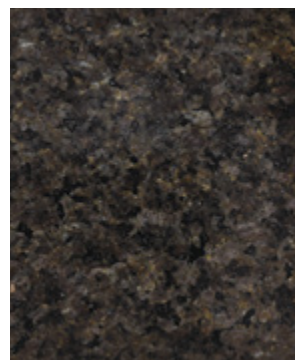


**SAN REMO**

A collection of granite-topped cabinets for backyard baking, grilling, dining and entertaining. Elegant, functional and affordable, these quality components and cabinets come with everything you need and are ready to assemble in any configuration you can imagine.



**VISCON WHITE GRANITE COUNTERTOP**



**BLACK PEARL GRANITE COUNTERTOP**

# NECESSARIES™ BARS & GRILLS



**DESIGN FEATURE**  
Affordable and easy to build.



1



2



3

1. Grand 8' Bar With Grill & Door Kit in Positano
2. Grand 8' Bar With Grill and Refrigerator Opening Kit in Positano\*
3. Compact Bar Front Open in Positano

Also available but not shown Grand Grill Surround Kit, Grand Corner Return Kit, Grand 4' Bar Kit and Compact Bar Front Closed Kit.

\*Refrigerator sold separately



POSITANO



VERONA



TORINO



SAN REMO

# NECESSARIES™ OUTDOOR FIREPLACES



**DESIGN FEATURE**

All kits are expandable to add a  
Hearth or Wood Box later.



1



2



3

1. Grand Fireplace Kit, Grand Wood Box Kit and Grand Hearth Kit in Positano
2. Compact Fireplace Kit, Compact Wood Box Kit and Compact Hearth Kit in Positano
3. Victorian Fireplace Kit in Verona

Also available but not shown Colonial Fireplace Kit, Colonial Wood Box Kit, Colonial Hearth Kit, Victorian Wood Box Kit and Victorian Hearth Kit.

\*Fireplace kit pictures shown may vary from actual kit dimensions as you are able to customize your fireplace to fit your needs.



POSITANO



VERONA



TORINO



SAN REMO

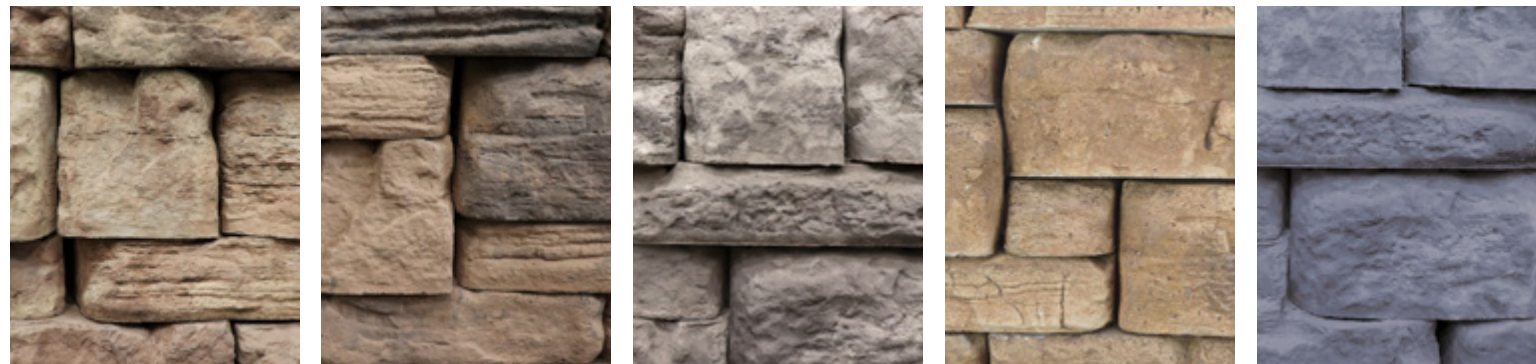
Printed colors shown in this brochure may vary from actual product colors. We recommend selecting colors from actual product samples.

# FIRE PITS



1. Belvedere in Custom Color 2. Ring of Fire in Bailey

## NEW BELVEDERE COLORS



MORRISON

BAILEY

GUNNISON

SANDSTONE

CHARCOAL

## NEW RING OF FIRE COLORS



MORRISON

BAILEY

GUNNISON

SANDSTONE

CHARCOAL



AB® Old Country Courtyard in Tan Blend



AB OLD COUNTRY  
COURTYARD TAN BLEND

AB OLD COUNTRY  
COURTYARD GREY BLEND

AB OLD COUNTRY  
COURTYARD RED BLEND

Printed colors shown in this brochure may vary from actual product colors. We recommend selecting colors from actual product samples.

# NECESSORIES™ WATER FEATURES



**DESIGN FEATURE**

Ideal for when in-ground waterfalls are not suitable.



Not everyone can live on a quiet lakeshore, but anyone can enjoy the calming sound of water in their backyard. Necessories waterfall kits are easy to build and essentially maintenance free. These above-ground designs are ideal when in-ground ponds and waterfalls are not suitable. Waterfall kits include all plumbing/connections.

- 1. Grand Waterfall Kit in Verona
- 2. Compact Waterfall Kit in Positano



POSITANO



VERONA



TORINO



SAN REMO



# NECESSARIES™ TABLES PILLARS & SEAT WALLS



**DESIGN FEATURE**

Projects can be built all at once or added to over time.



1



2



2

- 1. Dining Table Kit in San Remo
- 2. Pub Table Kit in San Remo
- 3. 20 inch Column with Glass Kit in Positano

Also available but not shown  
Bistro Table kit, 20 inch Column  
Kit, 24 inch Column Kit and  
Riverland Seat Wall Kit.



POSITANO



VERONA



TORINO



SAN REMO



### TECHNISEAL® NOCO SAND

NOCO is a “No Compaction” polymeric joint specially developed for the installation of flagstones and other paving materials for which mechanical compaction is not possible or difficult.

NOCO is the latest innovation in jointing technology from Techniseal, the world’s leading provider of hardscape jointing solutions.



### TECHNISEAL® HP NEXTGEL POLYMERIC SAND

The hardscape industry’s leading polymeric sand, HP Nextgel is a high performance jointing product that can be used in the installation of concrete and clay pavers, natural stone and porcelain tiles. Always delivering constant durable results.

#### AVAILABLE COLORS:



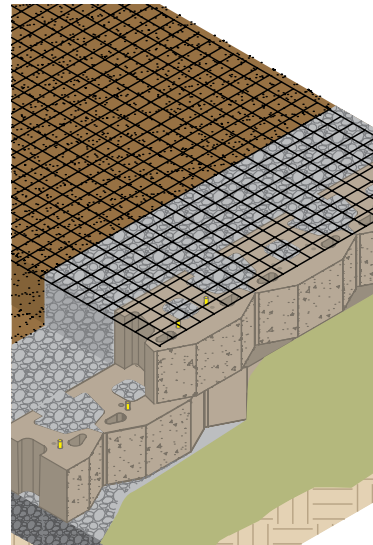
### GATOR EDGE - RIGID + FLEX

The Gator Edge Rigid & Flex are made with 100% Polypropylene Copolymer. This will give it great strength as well as providing greater flexibility. We have a Rigid model which is ideal for straight applications and the Flex model that can be used for all curved applications such as walkways, paths, entrances etc. Both the Rigid and Flex can be locked together with the “Twist & Lock” connection system. Finally, the Rigid could be transformed in a partial Flex by cutting the bridge support between each triangular angle.



### ALLIANCE GATOR NAILS

Gator Nails are high quality nails which are available in lengths of 10-in. and 12-in., common or spiral models. Gator Nails are designed for use with Gator Edge.



### REINFORCEMENT GRID

Reinforcement Grid is a high-strength polyester mesh that is used in conjunction with SRW units to create a retaining wall structure. Reinforcement Grid should be used in most walls over 3ft tall. Basalite offers ERS geogrids which are composed of high molecular weight, high tenacity multifilament polyester yarns that are woven into a stable network placed under tension. The high-strength polyester yarns are coated with a PVC material. ERS geogrids are inert to biological degradation and are resistant to naturally encountered chemicals, alkalis and acid



### GATOR BASE

Gator Base replaces concrete foundations and is engineered to replace 6” of crushed stone. The interlocking panels distribute all dynamic and static loads to a very wide area, practically eliminating any pressure on the ground.



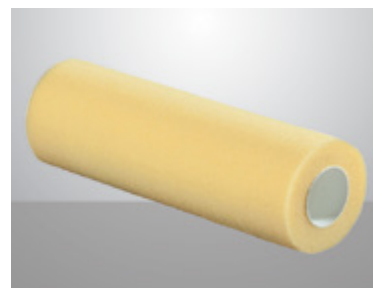
### ADJUSTABLE PEDESTALS

Bison pedestals create level rooftop decks over sloped surfaces, supporting Basalite® Cityscape 2x2s, Wood Tiles, Site Furnishings and other decking materials to create a level deck over sloped surfaces.



### SLEEVE-IT® SYSTEM

Sleeve-It® is a patented fence-post anchoring system that integrates stable fence footings into the support structure of an SRW while it is being constructed. Sleeve-It is the only pre-engineered below-grade system for enhancing the fence foundation stability in an SRW taller than 30”.



### TECHNISEAL® SLIT FOAM ROLLER

Slit-foam Roller for solvent-based paver Protectors and Asphalt Protectors. Does not compress — Remains spongy. Allows uniform application.



### TECHNISEAL® CLEAR LOOK SEALANT (EV) SEMI-GLOSS FINISH

Made of acrylic and urethane, Natural Look EV Protector is specially designed to protect concrete pavers. It prevents deterioration due to chemical products such as de-icing salts, while providing resistance to acids and alkalis. Its transparent film stops the penetration of contaminants, facilitating the maintenance of pavers. Doesn’t release unpleasant fumes, and is environmentally friendly.



### TECHNISEAL® COLOR BOOST SEALANT (CB) MATT FINISH

Color Boost CB Protector is specially designed to protect porous concrete pavers. It prevents deterioration due to chemical products such as de-icing salts, while providing resistance to acids and alkalis. Its active agents form an invisible bond that stops the penetration of contaminants, facilitating the maintenance of pavers. Doesn’t release unpleasant fumes, and is environmentally friendly.



### TECHNISEAL® WET LOOK SEALANT GLOSS FINISH

Made of acrylic and plasticizers, Wet-Look Sealant (WL4) has a gloss-finish and microporous transparent coating that protects pavers made of concrete while enhancing their original color. It reduces oil and dirt penetration, and makes cleaning easier. Easy to apply, it penetrates the surface for maximum adhesion and durability. will not peel or discolor. It resists the elements (freeze-thaw cycles, sun, rain, etc.), as well as calcium, salt and hot tire pick-up.



### TECHNISEAL® PAVER PREP HD

Techniseal® HD Paver Prep is specially formulated to dissolve efflorescence (whitish salt) and remove ground-in dirt (traffic marks, etc.) on pavers, slabs and retaining walls made of concrete. Containing no hydrochloric (muriatic) acid, it works deep without discoloring or damaging the surface. It brightens up colors, cleans evenly and enables sealers to better penetrate the surface of the material.



### TECHNISEAL® EXACT SPRAYER

Connects to a garden hose, facilitates application and automatically provides a perfect water/cleaner mix. Allows selection of proper dilution for Pre-Seal Cleaner, Paver Prep or Hardscape Cleaner.



### TECHNISEAL® STRUCTURE BOND

StructureBond™ is an innovative super-strength foam adhesive that bonds a wide range of construction products. StructureBond Gun allows for a precise adhesive delivery with a single pull of the trigger that stops as soon as you let go. It requires no pumping, cutting or puncturing of cartridge nozzles. Application time is up to 50% faster than with conventional tube adhesives.



### TECHNISEAL® PRO GRADE OIL & GREASE CLEANER

Professional Grade Oil and Grease Remover is an industrial strength oil and grease remover. It lifts and absorbs embedded oil stains as it dries from a liquid to a powder. Specially formulated for concrete pavers, slabs and walls, natural stone, poured or stamped concrete, etc.



### TECHNISEAL® RG+ CONCRETE ADHESIVE

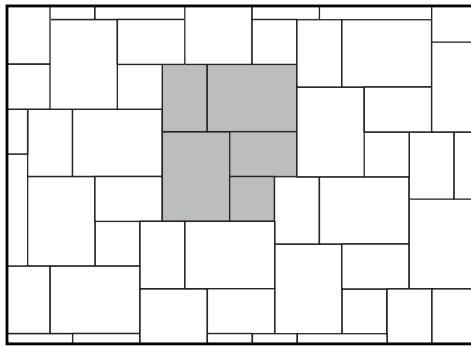
Color Boost CB Protector is especially designed to protect porous concrete pavers. It prevents deterioration due to chemical products such as de-icing salts, while providing resistance to acids and alkalis. Its active agents form an invisible bond that stops the penetration of contaminants, facilitating the maintenance of pavers. Doesn’t release unpleasant fumes, and is environmentally friendly.



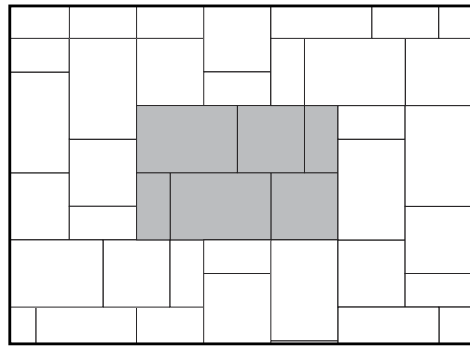
### WALL DRAIN PRO

Wall Drain Pro is designed to be an integral component of any landscape wall construction. Use Wall Drain Pro for proper drainage and a beautiful finished wall with any Basalite Wall System.

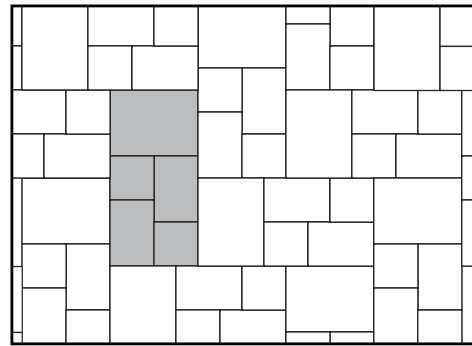
3 Piece Pattern No. 1  
60% 9x12 - 30% 6x9 - 10% 6x6



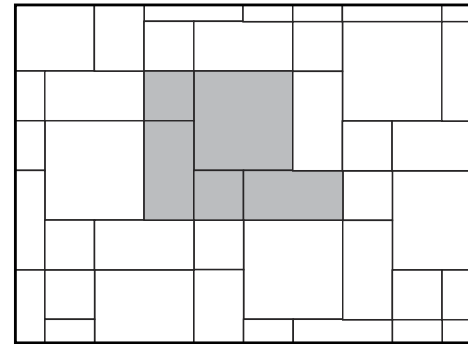
3 Piece Pattern No. 2  
50% 12x18 - 33% 12x12 - 17% 6x12



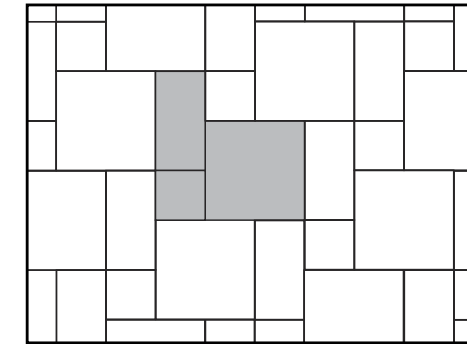
3 Piece Pattern No. 3  
38% 9x12 - 38% 6x9 - 24% 6x6



3 Piece Pattern No. 4  
40% 12x12 - 40% 6x12 - 20% 6x6

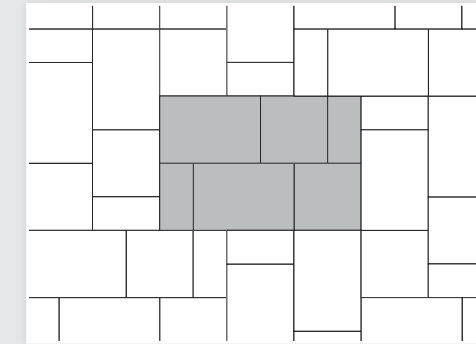


3 Piece Pattern No. 7  
57% 12x12 - 29% 6x12 - 14% 6x6

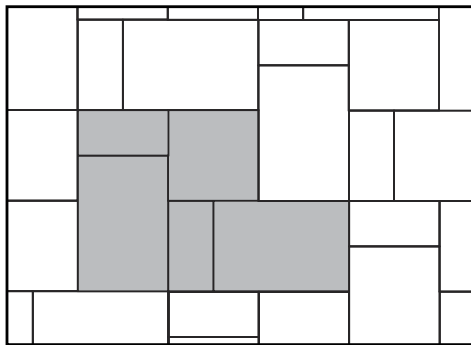


PREMIER SMOOTH COMBO

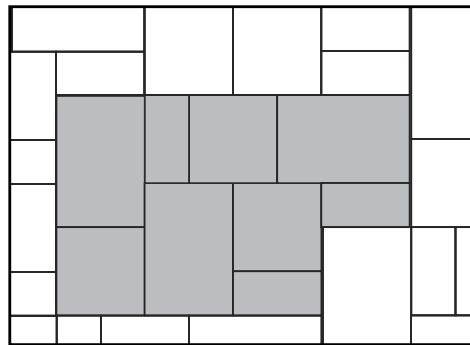
Using an equal number of pieces creates a repeatable pattern



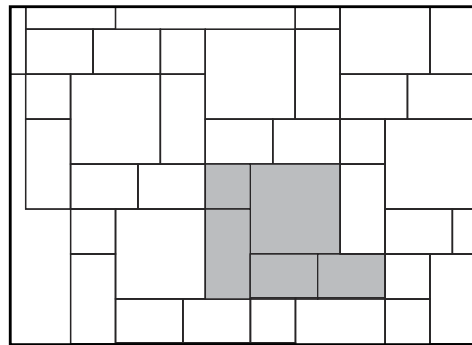
3 Piece Pattern No. 10  
60% 12x18 - 20% 12x12 - 20% 6x12



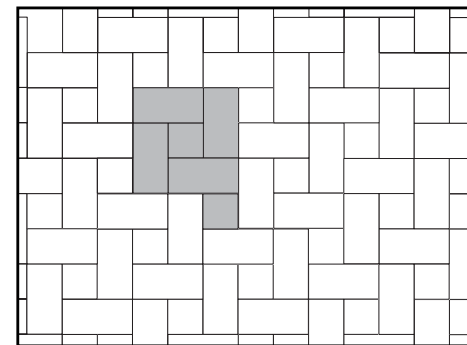
3 Piece Pattern No. 11  
50% 12x18 - 33% 12x12 - 17% 6x12



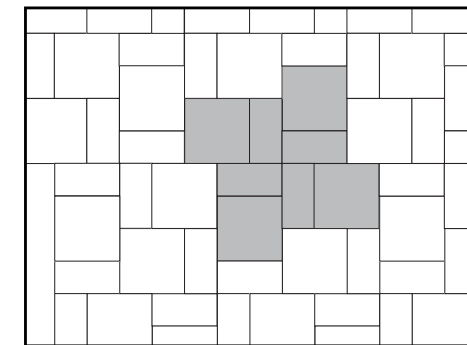
4 Piece Pattern No. 1  
40% 12x12 - 20% 6x12 - 30% 6x9 - 10% 6x6



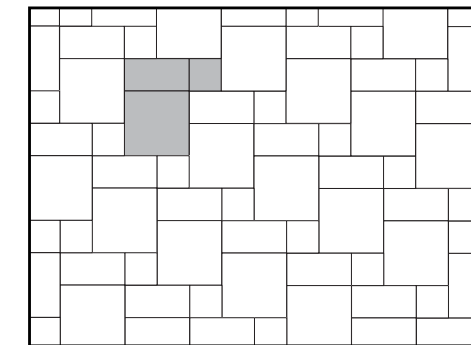
Pinwheel  
80% 6x12 - 20% 6x6



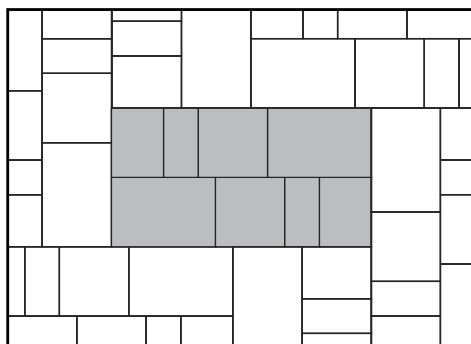
Blend  
60% 12x12 - 40% 6x12



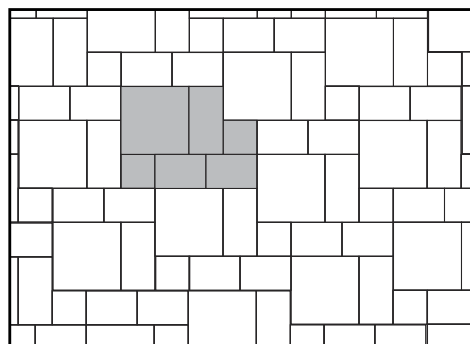
Premier Random Pattern No. 1  
58% 12x12 - 28% 6x12 - 14% 6x6



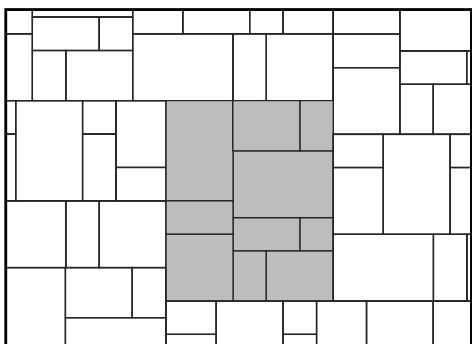
4 Piece Pattern No. 2  
40% 12x18 - 27% 12x12 - 20% 9x12 - 13% 6x12



4 Piece Pattern No. 3  
40% 12x12 - 20% 6x12 - 30% 6x9 - 10% 6x6

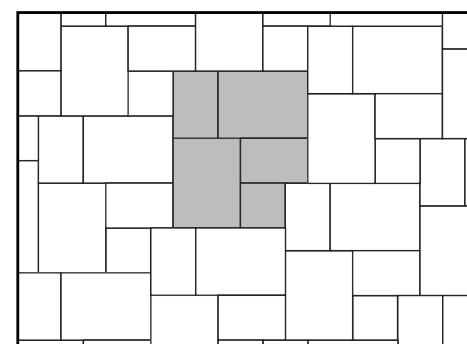


6 Piece Pattern No. 1  
40% 12x18 - 13% 12x12 - 20% 9x12 - 13% 6x12 - 10% 6x9 - 4% 6x6

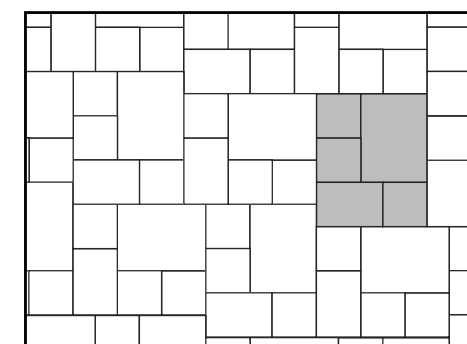


ITALIAN RENAISSANCE PREMIER

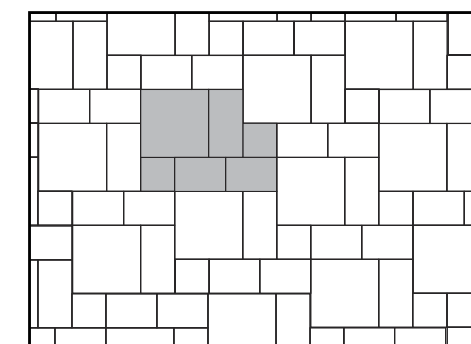
3 Piece Pattern No. 1  
60% 9x12 - 30% 6x9 - 10% 6x6



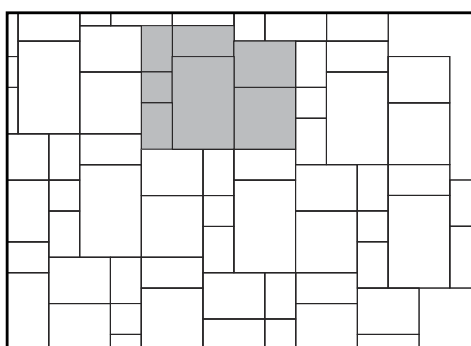
3 Piece Pattern No. 5  
40% 9x12 - 20% 6x9 - 40% 6x6



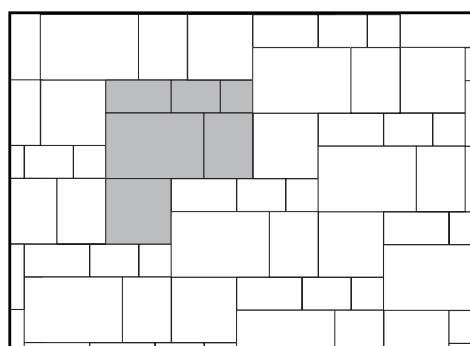
4 Piece Pattern No. 3  
40% 12x12 - 20% 6x12 - 30% 6x9 - 10% 6x6



6 Piece Pattern No. 2  
32% 12x18 - 21% 12x12 - 16% 9x12 - 10% 6x12 - 16% 6x9 - 5% 6x6

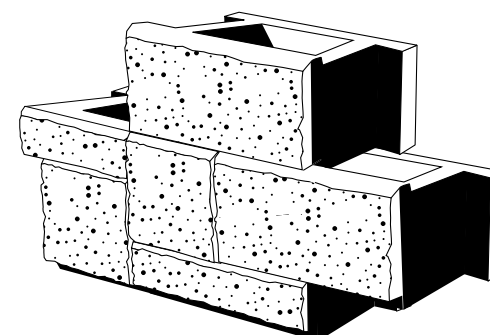


6 Piece Pattern No. 3  
34% 12x18 - 23% 12x12 - 16% 9x12 - 11% 6x12 - 9% 6x9 - 6% 6x6

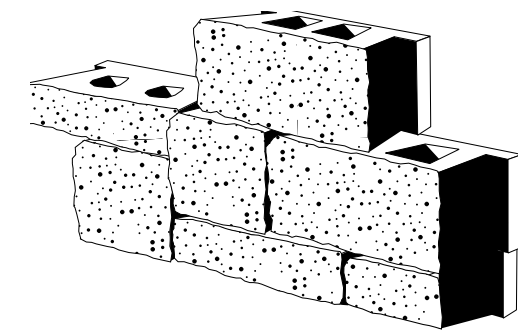


**WANT LARGER PATTERNS?**  
Visit [Basalite.com](http://Basalite.com) and search our Document Library

AB Ashlar Blend™



AB Abbey Blend™



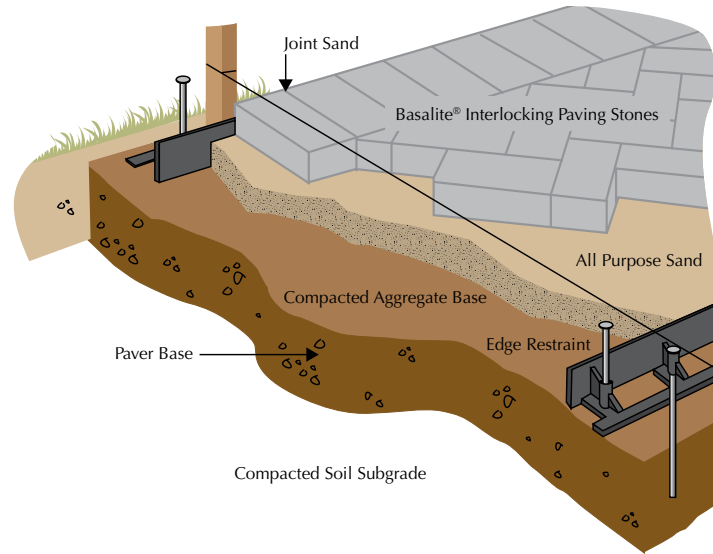
For use with AB® Collection and AB Aztec Wall Systems

For use with AB Europa® Collection Wall System

\*The installation instructions and illustrations shown are a basic overview of paver and wall installation methods. Because installation methods vary per product, please refer to the Basalite product specific installation guide, the Standard ICPI installation method, ICPI.org or visit [www.basalite.com](http://www.basalite.com).

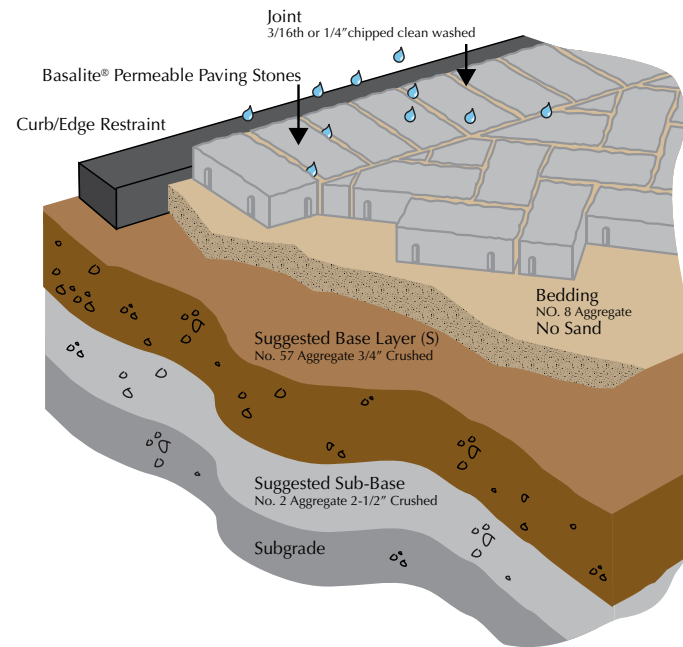
## TYPICAL PAVER INSTALLATION\*

1. Excavate unsuitable, unstable or unconsolidated subgrade material and compact the area which has been cleared. Backfill and level with dense graded aggregate suitable for base material (typically 3"-6" for pedestrian/light vehicular traffic and 8"-10" for driveway applications), or as otherwise directed by site engineer/architect/landscape architect.
2. Install edge restraint using concrete curb, concrete toe or edging.
3. Place bedding course of sharp, normal-weight screening or concrete sand to a uniform depth of approximately 1" leveled to grade.
4. Install Basalite Pavers hand tight with joints approximately 1/8". Where required, cut stones with an approved cutter to fit accurately.
5. Tamp pavers with mechanical vibrator, uniformly level, true to grade and free of movement. **TIP: If your pavers have a textured surface, use a compactor with a urethane pad or place a sheet of geotextile or old low-pile carpet, over the surface before compacting to reduce scuffing.**
6. Fill voids in joints by sweeping dry, fine, sharp sand over pavers.



## PERMEABLE PAVER INSTALLATION\*

1. Excavate unsuitable, unstable or unconsolidated subgrade material and compact the area in accordance to ICPI guidelines. Backfill and level Sub-base with No. 2 aggregate 2-1/2" crushed. Backfill and level base layer with No. 57 aggregate 3/4" crushed. The joint material and the foundation (paver bed, subbase, subgrade) must be permeable. 60mm thick pavers may be used in pedestrian applications.
2. Install edge restraint using concrete curb, concrete toe or edging.
3. Place bedding course of No. 8 aggregate 3/8" leveled to grade.
4. Install Pavers in closed assembly with spacer on stone for water drainage. Fill joints with gravel. Where required, cut stones with an approved cutter to fit accurately.
5. Tamp pavers with mechanical vibrator, uniformly level, true to grade and free of movement. **TIP: If your pavers have a textured surface, use a compactor with a urethane pad or place a sheet of geotextile or old low-pile carpet, over the surface before compacting to reduce scuffing.**
6. Fill voids in joints by sweeping dry ASTM No. 8, 89 or 9 stones.



\*The installation instructions and illustrations shown are a basic overview of wall installation methods. Because installation methods vary per product, please refer to the Basalite® product specific installation guide, the NCMA-SRW installation guide, NCMA.org or visit [www.basalite.com](http://www.basalite.com).

## TYPICAL RETAINING WALL INSTALLATION\*

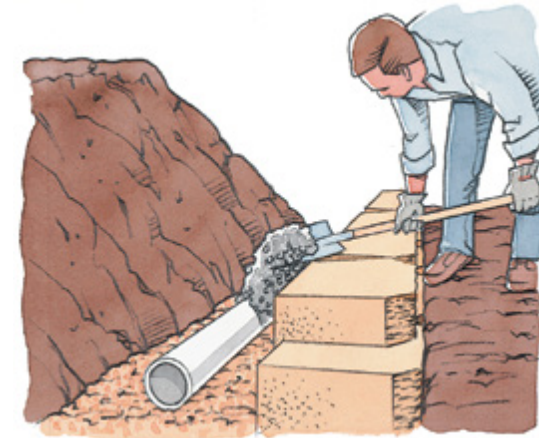
### A. PREPARE BASE LEVELING PAD

Excavate for the leveling pad. The trench should be at least 12 inches wider than the block you are installing and 6 inches deeper than the height of the block. Use a compactible base material of 3/4-inch minus (with fines) for the leveling pad. The pad must extend at least 6 inches in front of and behind the first course of block, and be at least 6 inches deep after compaction. If the planned grade along the wall front will change elevation, the leveling pad may be stepped up in 6-inch increments to match the grade change. Start at the lowest level and work upward whenever possible. Compact the aggregate and make sure it's level front to back and side to side. Mist lightly with water before compaction.



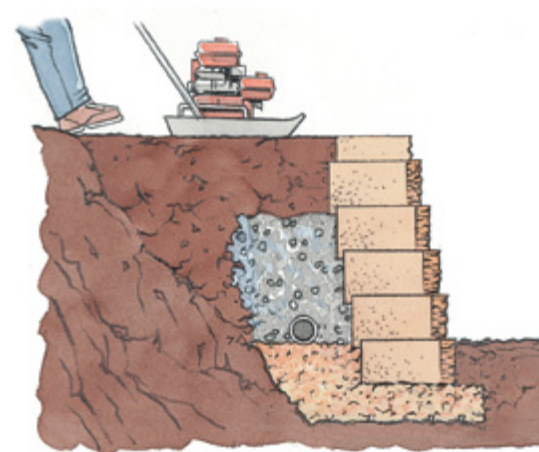
### B. BASE COURSE

Begin laying block at the lowest elevation of the wall. Place the first block level, front to back and side to side; lay subsequent blocks in the same manner, flush against each other. Make sure they are in full contact with the leveling pad. If the wall is on an incline, don't slope the blocks; step them up so they remain consistently level. For multiple-piece products, use the largest unit, for the base course. Complete the base course before proceeding to the second course. A drainage pipe should be placed at the rear base of first course.



### C. STACK AND FILL

Place the second course of blocks on top of the base course. Remember to keep the wall on bond by placing units in a staggered relationship to the course beneath. Pull each block forward as far as possible to ensure the correct setback. Backfill with drainage aggregate directly behind the block, adding 6 inches at a time, followed by proper compaction. Add soil fill behind the aggregate. Compact before the next course is laid. With the top units dry and clean, stack the caps on top of the final row and use a masonry construction adhesive such as Hardscape Zone adhesive.



# THE VERY BEST MADE HERE

Our state-of-the-art Colorado facility enables us to control every step of the manufacturing process, ensuring that the highest standards of quality pavers, walls, outdoor living kits and packaged concrete products are delivered to you.



FOLLOW US



[basalite.com](https://www.basalite.com)

1801 S Rollie Ave.  
Ft. Lupton, CO 80621  
303-292-2345

3255 Drennan Road  
Colorado Springs, CO 80910  
719-390-5477

© 2024 Basalite® Concrete Products. All trademarks ® are registered trademarks. AB® Collection, AB Aztec™, AB Europa® Collection, AB® Courtyard, and AB® Fence™ are registered trademarks of Allan Block. Rosetta® Outcropping, Rosetta® Step Collection, Rosetta® Belvedere and Rosetta® Kodah are registered trademarks of Rosetta®. 5/28/24 CO-KQ 6K