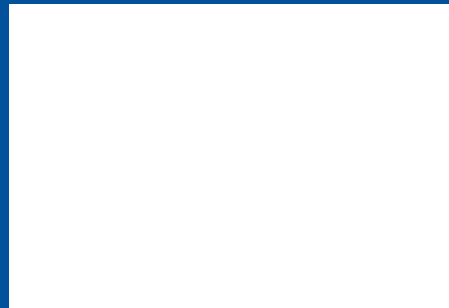


Visit Us Online

For more information about Basalite paving stones, retaining walls, accessories, patterns or installation instructions, visit us online at basalite.com.

Offered by:



605 Industrial Way
Dixon, CA 95620
800-776-6690

11888 West Linne Rd
Tracy, CA 95376
800-776-6690

1201 Golden State Blvd
Selma, CA 93662
559-896-0753

ALBERTA • BRITISH COLUMBIA • CALIFORNIA • COLORADO • IDAHO • NEVADA • WASHINGTON

www.basalite.com



©2014 Basalite® Concrete Products, LLC. All trademarks ® are registered trademarks.
The U.S. Green Building Council Member logo is a trademark owned by the U.S. Green Building Council and is used by permission.

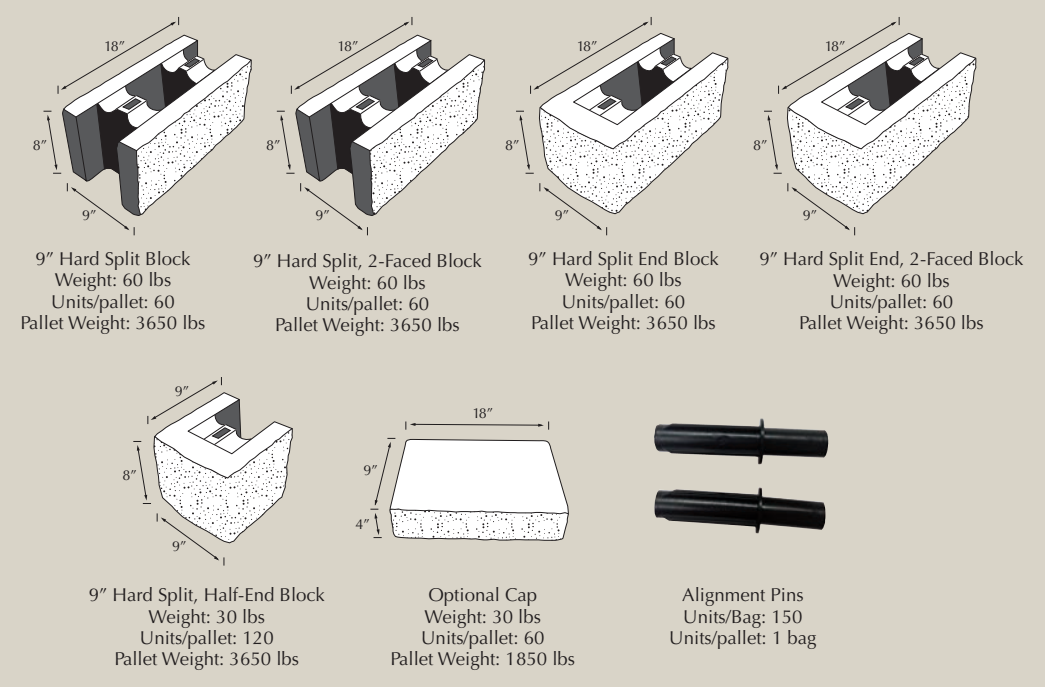
 **BASALITE®**
Retaining Wall Solutions
GEO WALL™
DSM



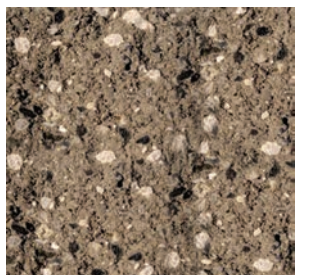
www.basalite.com



SPECIFICATIONS



COLORS



Tan



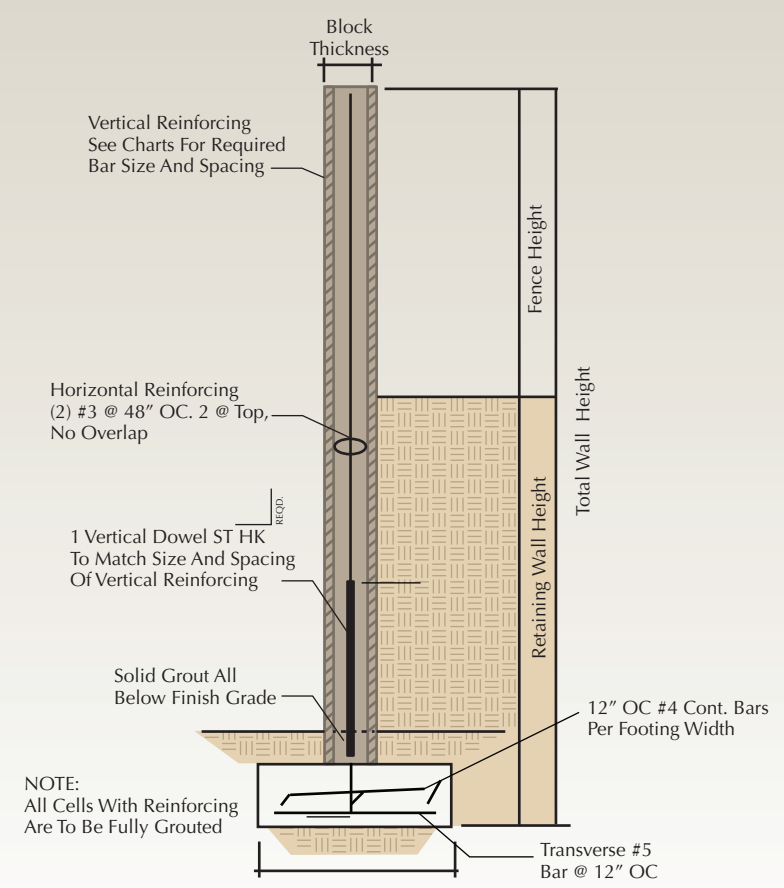
Grey

NOTE: Printed colors shown in this brochure may vary from actual product colors. We recommend selecting colors from actual product samples.

Custom colors are available by special order - please contact your local dealer.

TYPICAL WALL INSTALLATION

The installation illustration shown is a basic overview of the wall installation method. Due to the variety of applications, please contact your Basalite representative, or visit us online at Basalite.com.



GEO WALL™ DSM

Retaining Wall

Geowall DSM is a dry stack modular block system that can be used to construct sound walls, lot line walls, privacy walls, and retention or partition walls. By eliminating the need for traditional retaining wall batter and geogrid, Geowall DSM maximizes the available space on sloped lots.

Geowall DSM is a durable and cost-effective wall system that provides the right solution for almost any wall project.

Above: Sonoma Raceway Entrance, Sonoma, CA
 Cover: School Wall, American Canyon, CA