



# FIBER EXPANSION JOINT

◆ The Pro's Choice Since 1936



Sakrete® Fiber Expansion Joint is a multi-purpose expansion contractor joint filler. It is composed of cellular fibers securely bonded together and uniformly saturated with asphalt to assure longevity. It will not deform, twist, or break with normal on-the-job handling.

## Features:

- Resilient, flexible and non-extruded
- Can compress to half of its original thickness and recover to a minimum of 70%
- Tough, lightweight, easy-to-use, semi rigid available in stripes
- Easy to cut
- Dimensionally stable, non-sticky in summer or brittle in winter

## Use For:

- Highways
- Streets
- Airport runways
- Industrial floors
- Driveways
- Flatwork
- Commercial applications

## Product Dimensions:

Thickness	Height & Length	Weight
1/2" Thick	4" Height 5' Length	19 lb. per cu. ft.

## Technical Data:

Conforms to or meets:
AASHTO M 213
ASTM D 1751
Corps of Engineers CRD-C 508
FAA Specification Item P-610-2.7
HH-F-341 F, Type 1

## DIVISION 3

Structural Concrete - 03 31 00  
Rigid Pavement Repair - 32 01 29

## LEED Information:

May help contribute to LEED Credits:

- Regional Material (MRc5)
- Recycled Material (MRc4)

## Preparation:

1. Sakrete Expansion Joint is to be positioned against the forms, at interrupting objects or columns, and against abutting structures prior to the placement of concrete.
2. Fiber expansion joint should be installed 1/2" (12.7 mm) below the concrete surface to accept a joint sealant which will provide for maximum protection from water infiltration and weathering, in addition to keeping the joint free from incompressibles.

*NOTE: it is the responsibility of the installer/applicator to ensure the suitability of the product for its intended use.*

## Safety:

For additional information, call manufacturer at 866-725-7383 or CHEMTREC at 800-424-9300 or 703-527-3887 outside of the USA. Refer to Safety Data Sheet (SDS) for further information.

**⚠ WARNING: Cancer. [www.P65Warnings.ca.gov](http://www.P65Warnings.ca.gov)**

**⚠ ADVERTENCIA: Cáncer. [www.P65Warnings.ca.gov](http://www.P65Warnings.ca.gov)**

## KEEP OUT OF THE REACH OF CHILDREN AND ANIMALS.

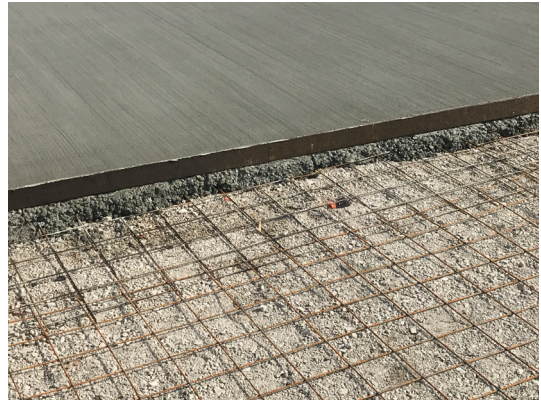
For additional information, call the manufacturer at 866-725-7383 or Chemtrec at 800-424-9300 or 703-527-3887 outside of USA. Refer to Safety Data Sheet (SDS) for further information.

## Limited Product Warranty:

The manufacturer warrants that this product is free from defects in material and workmanship and will perform per the manufacturer product literature in effect at the time of purchase. This warranty is for one (1) year from the date of purchase. Any implied warranty of merchantability or fitness for a particular purpose is limited to the duration of this express warranty. This warranty applied only if the product is used, in strict accord with manufacturer published instructions. The sole and exclusive remedy under this warranty is replacement of the defective product or refund of the purchase price, at manufacturer's option. CONSEQUENTIAL, SPECIAL, AND INCIDENTAL DAMAGES ARE NOT RECOVERABLE UNDER THIS WARRANTY. All claims under this warranty must be submitted to manufacturer by calling 866-725-7383. This warranty gives you specific legal rights, and you may also have other rights which vary from state to state.



◆ The Pro's Choice Since 1936



Sakrete® and the background design are registered trademarks of SAKRETE of North America LLC, 327 Hillsborough Street Raleigh, North Carolina 27603-1725 ©2018. SAKRETE® is manufactured under license from SAKRETE of North America LLC. For current and complete product information, contact SAKRETE Technical Services toll-free at 866-725-7383 or visit [Sakrete.com](http://Sakrete.com)