

# Above Ground Pond



[Watch the video here](#)



Enhance your flower garden, backyard or patio with a beautiful pond. Bring the sound of water, plants or even fish to your outdoor space to create a tranquil setting.

[allanblock.com](http://allanblock.com)

**Provided are instructions to build the following:**

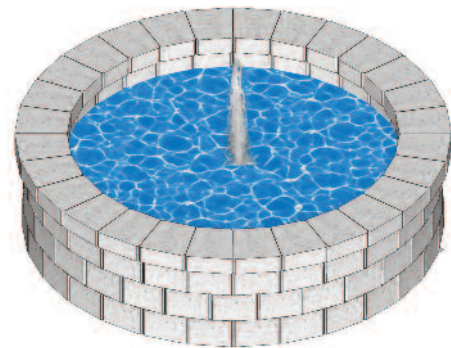
Round Pond

**Number of blocks needed for this project:**

- 90 AB York
- 30 Wall Caps
- Flexible Concrete Adhesive
- 1 Pre-fabricated plastic liner
  - 1 - 6 ft diameter x 1.5 ft. (1.8 x 0.46 m)
- 10 Bags of Crushed Rock\* - 50 lb (23 kg) each
- 6 Bags of Decorative Rock\* - (optional) 50 lb (23 kg) each

\* Quantities will vary depending on the required depth of crushed and decorative rock.

These are the exact numbers based on our installation. We would recommend purchasing additional block to accommodate for design changes, shipping or breakage.



Some of the tools you will need:

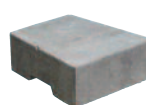
- |                 |                      |
|-----------------|----------------------|
| Shovel          | Gloves               |
| Level           | Safety Glasses       |
| Tape Measure    | Hand Compactor       |
| Hammer & Chisel | A 2 x 4 for Leveling |
| Wheelbarrow     |                      |

## Blocks used in this project.

AB York Block



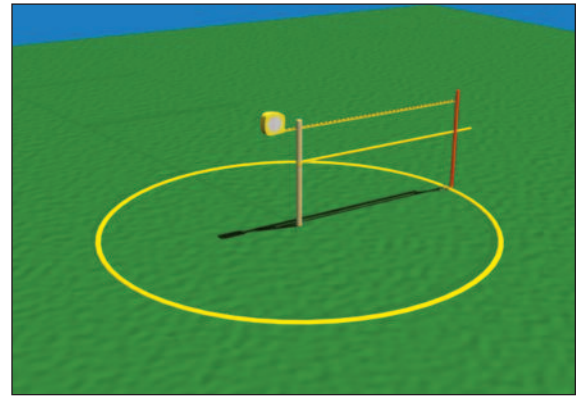
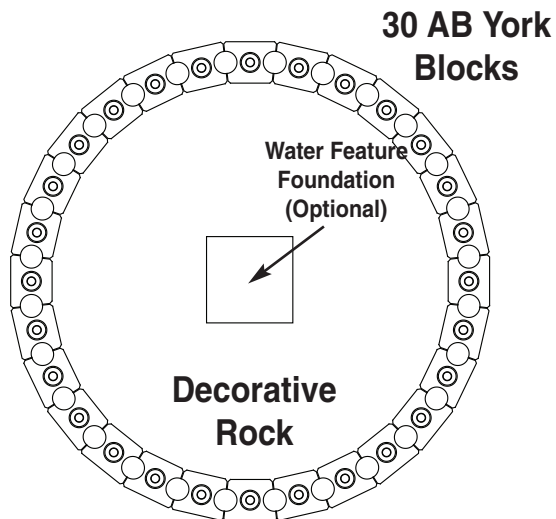
Wall Cap



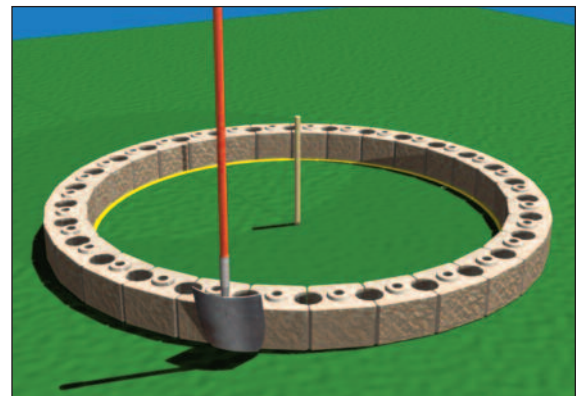
# Installation

## Step 1 Layout

Place a stake in the center of where you would like to build your pond. Measure the diameter of the pond liner, then mark on the string one half of the diameter. Tie the string to the stake and rotate it marking the ground for the liner. Temporarily place 30 AB York blocks along the outside of the circle marked on the ground. **The amount of blocks needed is based on the pre fabricated liner that is being used.** Verify the liner size and adjust blocks as needed to fit the design. Use a shovel to cut around the blocks and mark where the sod and soil will be removed to construct the base.



Determine Layout



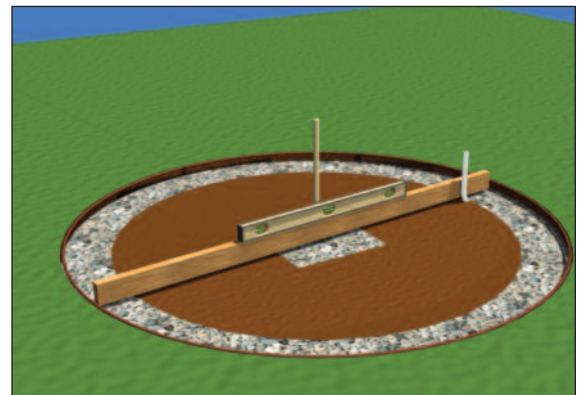
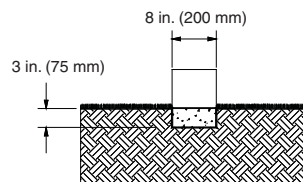
Excavate Area

## Step 2 Excavate

Remove the blocks used to layout the pond location. Then remove the sod in the entire area and 3 in. (75 mm) of soil under the blocks 8 in. (200 mm) wide. If your plans includes a decorative center sculpture or fountain it is recommended to remove additional soil in the center to construct a stronger base. If electricity is required please follow local electrical codes.

## Step 3 Prepare the Foundation Pad

Next prepare the foundation pad by placing 3 in. (75 mm) of crushed rock in the trench. Level the area making adjustments where needed. A straight 2x4 and a level makes easy work of leveling the site. Compact the rock with a hand tamper.



Prepare and Level Foundation

## Step 4 Stacking Blocks

Start building the pond using the string to position the blocks. Building two courses at a time will ensure proper alignment. Check the blocks for level. Make adjustments to the circumference of the circle so that cutting is not required. Next add the third course of blocks.



Install and Level Blocks

# Installation

## Step 5 Add the Liner

Place the pre-fabricated liner in the ring of blocks.

## Step 6 Install Wall Caps

Finish with Wall Caps. Place all caps with the long side facing the outside of the curve centered over the two AB York blocks.

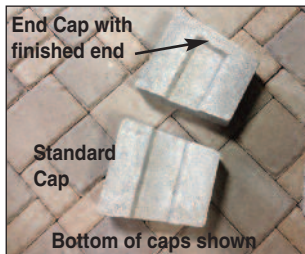
## Tips and Tricks

The Wall Caps are manufactured with a standard and end cap finish. There is an average of 1 end cap for every 4 standard caps when offered by the local manufacturer - check for availability.

There are two ways to install an end cap when it meets up with the raised ring of the AB York block. See [allanblock.com](http://allanblock.com) for [video on installation](#).

Option 1: When the end caps meets up with a raised ring of a AB York block, flip this AB York block over to create a flat surface. This will allow the cap to be placed with no modification needed.

Option 2: Using a hammer and chisel, break off the finished end piece on the bottom of the cap to allow for proper installation.



Install Liner and Caps



Water Feature



Once all the caps are installed, secure them in place with a bead of flexible concrete adhesive on both sides of the raised rings.

## Step 7 Add Decorative Rock and Accessories

Place your choice of clean decorative rock in the bottom of the liner. Now you're ready to add water and other ornamental accessories to customize your design.