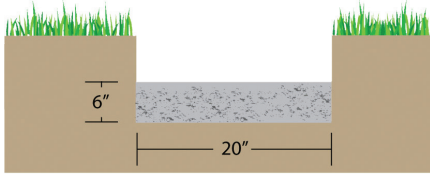


# STONEWALL® II<sup>®</sup>

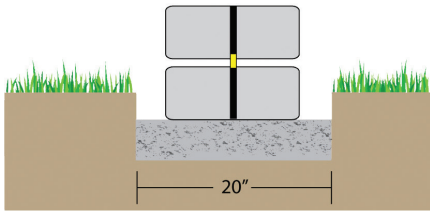
## INSTALLATION

The installation instructions and illustrations shown are a basic overview of wall installation methods. Because installation methods vary per product, please refer to the Basalite® product specific installation guide, the NCMA-SRW installation guide, NCMA.org or contact us at basalite.com.



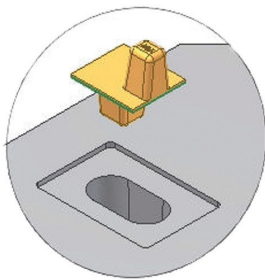
### A. PREPARE BASE LEVELING PAD

Excavate trench 20" wide and 12" deep along the length of wall, assuring depth provides proper unit embedment. On sloped sites, step up 6" to change elevation. Place 6" of 3/4"-1/2" crushed aggregate in the trench. Level, then compact to 95% or greater of standard proctor.



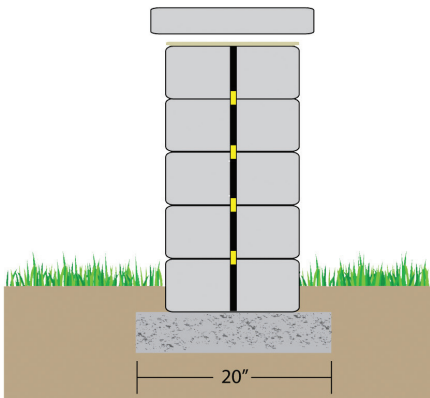
### B. SET AND ALIGN BASE COURSE

Starting at lowest elevation, ideally a corner, place and level the block using a string line and 2' level. Follow the suggested patterns as shown, or create your own. Make sure the recess next to the center core is placed top up. Place alignment plugs into the center core following the guidelines below. Lay out the entire bottom course before proceeding to the next courses. Place perforated drain pipe onto leveling pad, behind base course (retaining wall) then backfill, 12" deep, to top of wall with crushed aggregate. Stack additional courses altering the pattern course to course



### C. 3-WAY ALIGNMENT PLUG (3WAP)

After stacking the block course, place a 3WAP into the core of each unit, assuring that the flange on the plug rests within the recess adjacent to the core. Orient the plug to achieve your desired wall batter. Use the setback position for retaining walls to achieve a 7.3 degree batter, the vertical position for bench walls, and the reveal position to occasionally highlight a unit.



### D. CAPPING THE WALL

Adhere clean and dry cap blocks to the wall using silicon concrete construction adhesive. Place cap flush to the wall face or with an overhang.